





Stainless Steel Single Cartridge Clamp Filter Housings

Grace Stainless Steel Single Cartridge Clamp Filter Housings are designed with T-bar clamp closure, creating easy operation and quick cartridge change out. The clamp closure provides better sealing and enables the housings to withstand higher operating pressure. Completely constructed by SUS304 and SUS316, the housings accept cartridge sizes in 10", 20" and 30" with various end cap styles, and therefore become ideal choices for applications requiring high temperature and wide chemical compatibility.

- Ⓞ *Applicable for high temperature and special chemical which are not suitable for plastic housings.*
- Ⓞ *All parts are completely made by SS304 and SS316 with excellent anti-corrosion ability.*
- Ⓞ *Standard female PT, BSP and tapping NPT threads make connection easy and fit.*
- Ⓞ *T-bar clamp provides better closure and enables higher operating pressure withstanding.*
- Ⓞ *Units are all supplied with pipe plugs in the bottom for draining.*
- Ⓞ *The housings accept Cartridge sizes in length 10", 20", 30" with end cap styles in DOE, 222 and 226 Flat/Fin.*

Applications

Pre RO, Household Water Filtration, Chemicals, Laboratory Facilities, Electronics, Food & Beverage, In-line Liquid Processes

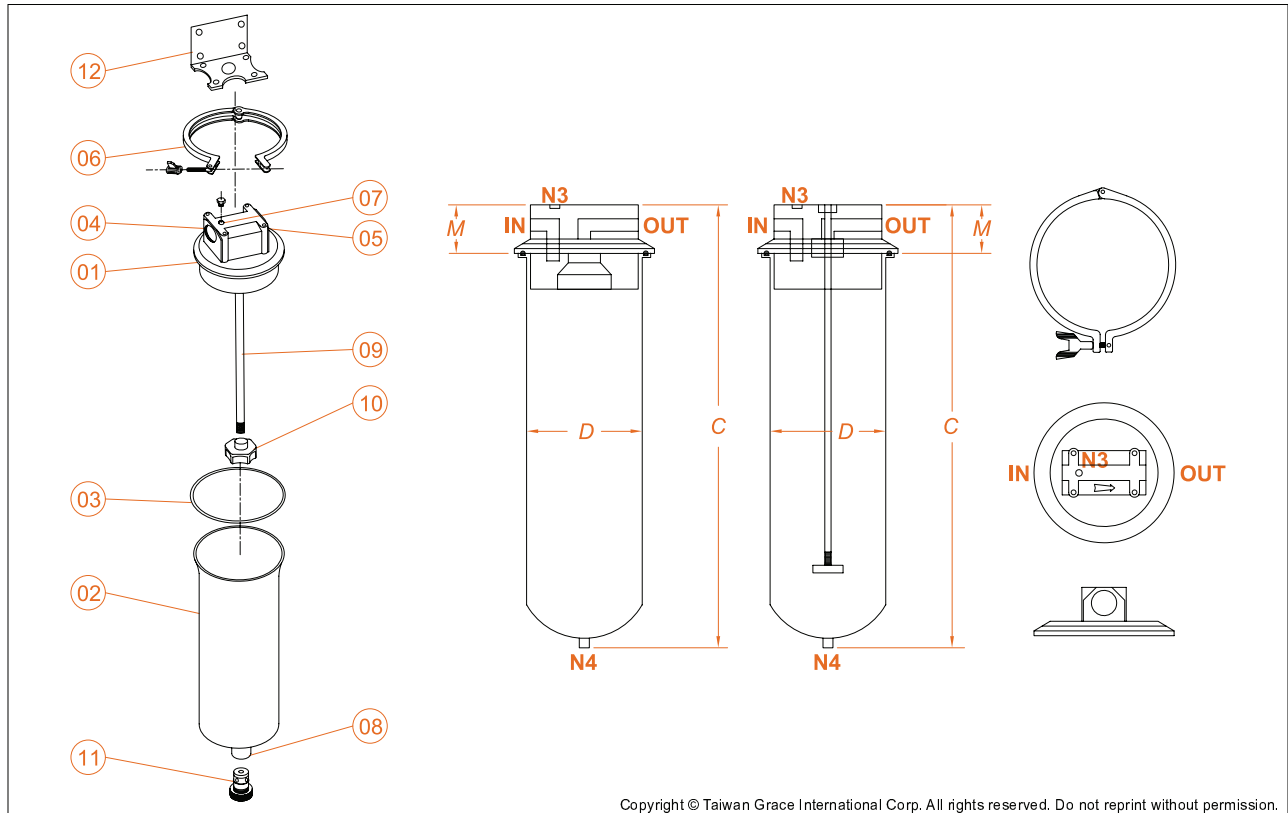
Operation Data

Maximum Operating Temperature : 75°C (167°F) (Base on selection of filter element and O-ring material.)
Maximum Operating Pressure : 7 bar at 75°C (100 psi at 167°F)

Ordering Information

Type	Cartridge Length	Material of Construction	Number of Cartridge	Connection	Inlet/Outlet Size (inch)	O-ring Option	Cartridge End Cap	Option
UFC Cartridge Filter Housing	05 – 5"	4 - SUS304 6 - SUS316	1 - 1 pce	N - NPTF P - PTF B - BSPF	06-3/4" 10-1"	E-EPDM S-Silicone V-Viton W -Teflon encapsulated Viton	0:Flat Gasket Double Open End 7:No Bayonets 2-226 O-ring Fin/Flat 8:2-222 O-ring with Fin/Flat 9: 2-226 O-ring with Fin/Flat	V-Drain with Plug
	10 – 10"							
	20 – 20"							
	30 – 30"							
UFC Cartridge Filter Housing	10"	SUS316	1 pce	NPTF	3/4"	EPDM O-ring	2-222 O-ring with Fin/Flat	Drain with Plug

Stainless Steel Single Cartridge Clamp Filter Housings



Components

No.	Description	Qty	No.	Description	Qty
01	Cap	1	07	Vent	1
02	Shell	1	08	Drain	1
03	O-ring	1	09	Screw Stay	1
04	Port(Inlet)	1	10	Screwed Nut	1
05	Port(Outlet)	1	11	Drain Plug	1
06	Clamp	1	12	Mounting Bracker	1

Dimensions

Model	C	ØD	M	N3 N4	Flow Rate	G. Weight
UFC10 1	400	106	52	1/4"	0 ~ 5 GPM / 0 ~ 1.1 m ³ /hr	4kg
UFC20 1	650	106	52	1/4"	0 ~ 10 GPM / 0 ~ 2.3 m ³ /hr	5.5kg
UFC30 1	900	106	52	1/4"	0 ~ 15 GPM / 0 ~ 3.4 m ³ /hr	7kg

UNIT : mm

Customized housings are available on requests.

Actual flow rates will be determined on element selection and fluid viscosity.



Stainless Steel Single Cartridge Filter Housings

Grace Stainless Steel Single Cartridge Filter Housings are manufactured by SUS304 and SUS316, featuring wide chemical compatibility and high temperature endurance. With the advantage of durability, the housings are particularly recommended for processes requiring high temperature which are not accepted by plastic filter housings. Available in standard and big sizes for different lengths of filter cartridges, the housings offer economic and efficient alternatives for general water filtration.

- Ⓞ *Applicable for high temperature and special chemical which are not suitable for plastic housings.*
- Ⓞ *All parts are completely made by SUS304 or SUS316 with excellent anti-corrosion ability.*
- Ⓞ *Standard PT, BSP and tapping NPT threads make connection fit and easy.*
- Ⓞ *Retainer ring closure make quick and easy. Units are shipped with SUS mounting bracket and wrench.*
- Ⓞ *Housings are supplied with or without pipe plugs in the bottom for draining.*
- Ⓞ *The filter housings accept cartridge sizes in length 5", 10", 20", 30" and 40" with double open ends in standard or big sizes.*

Applications

Pre RO, Household Water Filtration, Chemicals, Laboratory Facilities, Electronics, Food & Beverage, In-line Liquid Processes

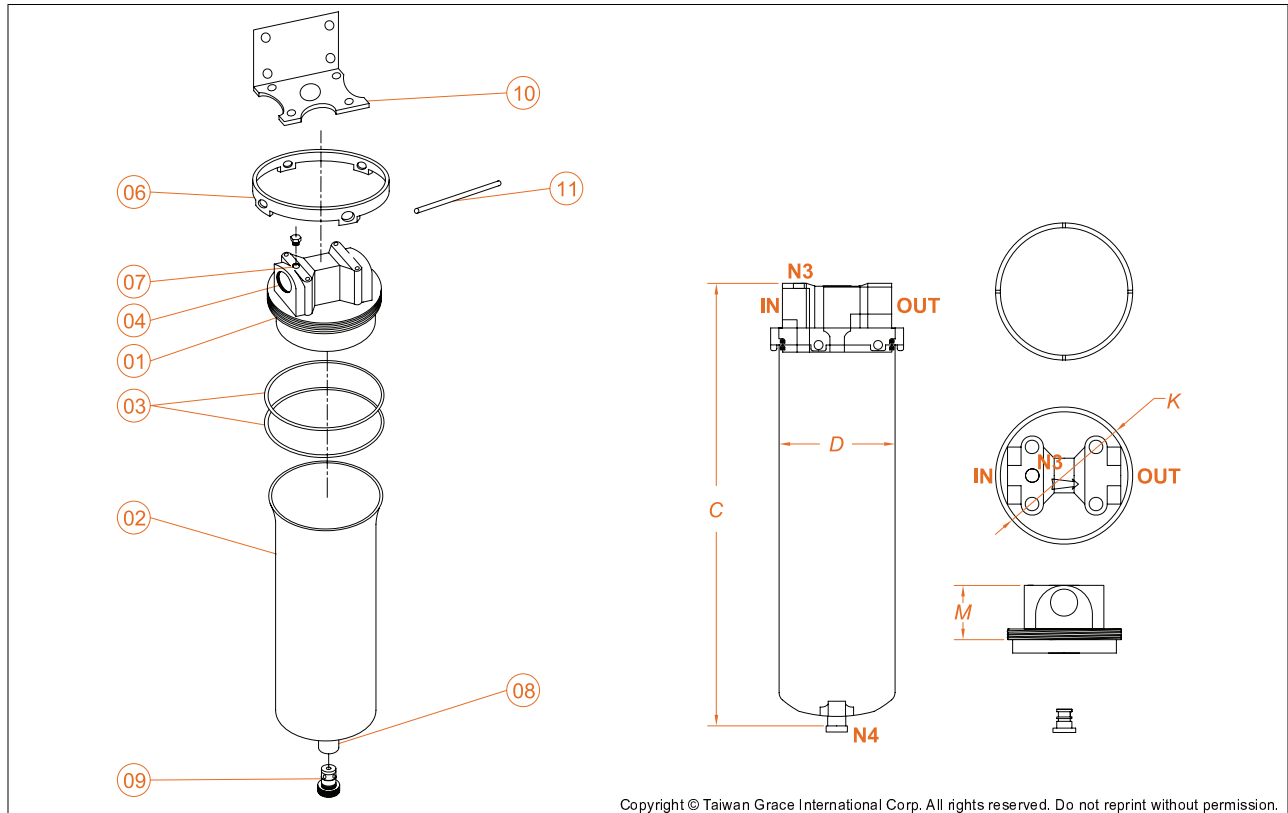
Operation Data

Maximum Operating Temperature : 75°C (167°F) (Base on selection of filter element and O-ring material.)
Maximum Operating Pressure : 5 bar at 75°C (72 psi at 167°F)

Ordering Information

Type	Cartridge Length	Cartridge Size	Material of Construction	Number of Cartridge	Connection	Inlet/Outlet Size (inch)	O-ring Option	Cartridge End Cap	Option
UFC Cartridge Filter Housing	05 – 5"	(blank) Standard B - Big	4 - SUS304 6 - SUS316	1 - 1 pce.	N - NPTF P - PTF B - BSPF	04-1/2" 06-3/4" 10-1"	E-EPDM S-Silicone V-Viton	(blank)- Flat Gasket Double Open Ends	V-Drain with Plug N-Flat Bottom P-All Polish
	10 – 10"								
	20 – 20"								
	30 – 30"								
40 – 40"									
UFC Cartridge Filter Housing	10		6	1	N	06	E	V	
Cartridge Filter Housing	10"		SUS316	1 pce	NPTF	3/4"	EPDM O-ring	Drain with Pipe Plug	

Stainless Steel Single Cartridge Filter Housings



Copyright © Taiwan Grace International Corp. All rights reserved. Do not reprint without permission.

Components

No.	Description	Qty	No.	Description	Qty
01	Cap	1	07	Vent	1
02	Shell	1	08	Drain	1
03	O-ring	1	09	Drain Plug	1
04	Port(Inlet)	1	10	Mounting Bracket	1
05	Port(Outlet)	1	11	Wrench	1
06	Retainer Ring	1			

Dimensions

Model	C	ØD	ØK	M	N3	N4	Flow Rate
UFC05 1	223	89	106	55	M6	M14	(Standard) 0 ~ 2.5 GPM / 0 ~ 0.6 m ³ /hr
UFC10 1	348	89	106	55	M6	M14	(Standard) 0 ~ 5 GPM / 0 ~ 1.1 m ³ /hr (Big) 0 ~ 10 GPM / 0 ~ 2.3 m ³ /hr
UFC20 1	602	89	106	55	M6	M14	(Standard) 0 ~ 10 GPM / 0 ~ 2.3 m ³ /hr (Big) 0 ~ 20 GPM / 0 ~ 4.5 m ³ /hr
UFC30 1	856	89	106	55	M6	M14	(Standard) 0 ~ 15 GPM / 0 ~ 3.4 m ³ /hr
UFC40 1	1110	89	106	55	M6	M14	(Standard) 0 ~ 20 GPM / 0 ~ 4.5 m ³ /hr

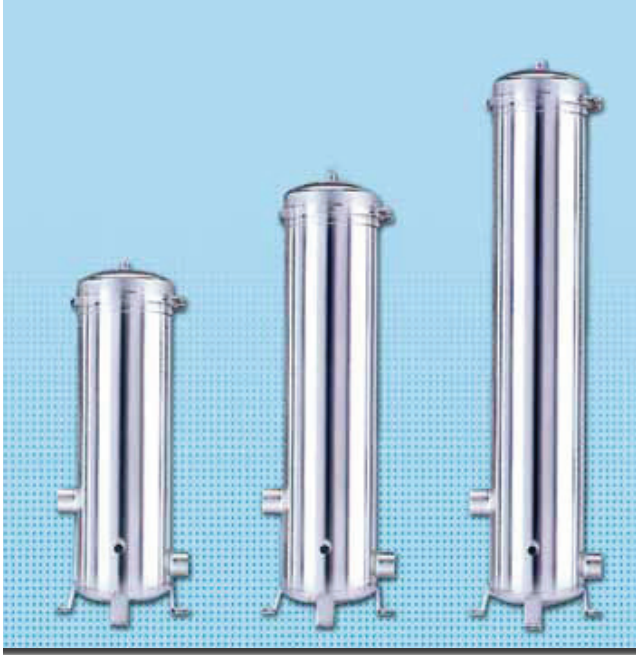
UNIT : mm

Customized housings are available on requests.

Actual flow rates will be determined on element selection and fluid viscosity.

Stainless Steel Cartridge Filter Housings

Grace Stainless Steel Cartridge Filter Housings are CE registered products which are manufactured by high quality workmanship. Clamp closure makes element change out quick and easy while ensuring good sealing performance. The housings accommodate different end cap styles of filter cartridges in either DOE or SOE, providing economic and efficient alternatives of filtration processes.



Applications

Pre RO, Household Water Filtration, Chemicals, Electronics, Food & Beverage, Cooling Water Filtration

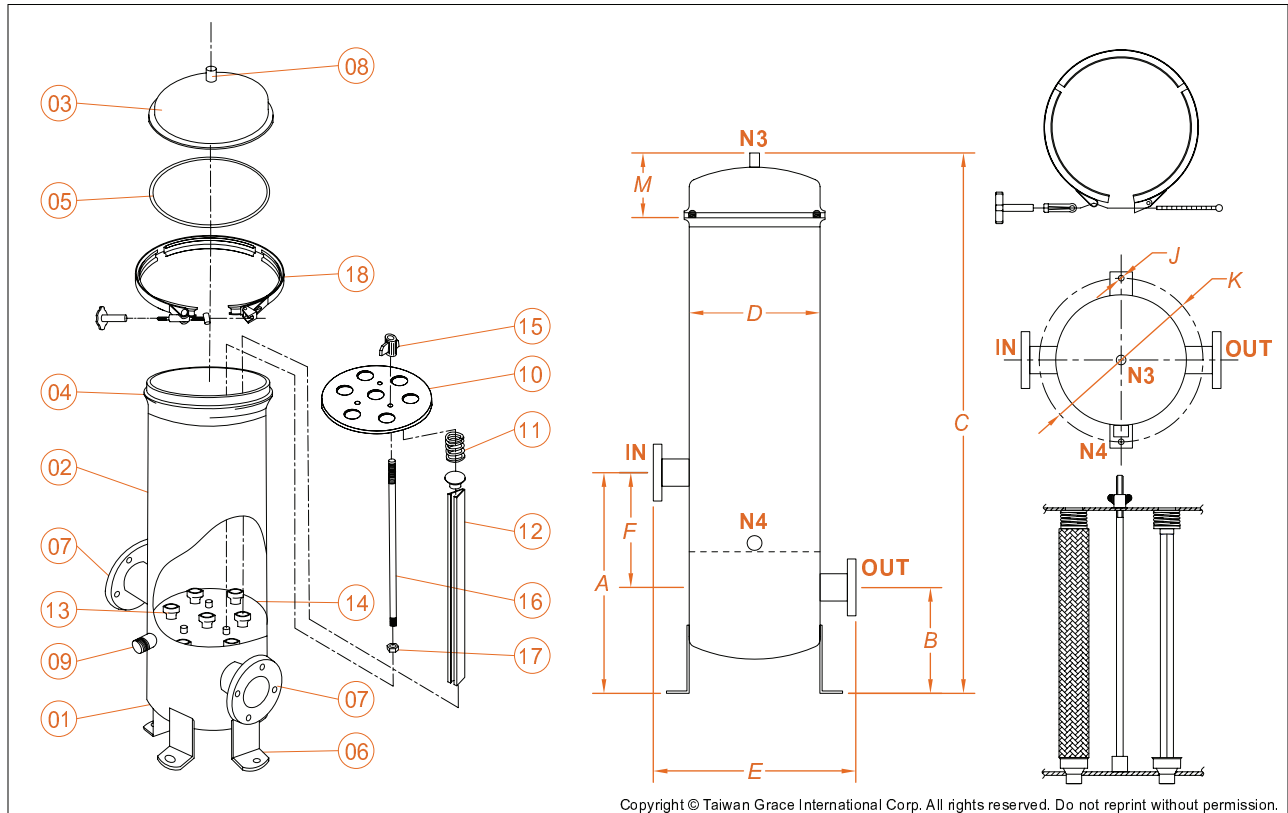
Operation Data

Maximum Operating Temperature : 75°C (167°F) (Base on selection of filter element and O-ring material.)
Maximum Operating Pressure : 7 bar at 75°C (100 psi at 167°F)

Ordering Information

Type	Cartridge Length	Material of Construction	Number of Cartridges	Connection	Inlet/Outlet Size (inch)	O-ring Option	Cartridge End Cap	Option
UFC Cartridge Filter Housing	10 - 10"	4 - SUS304	3-3pcs	P-PTF	10-1"	E -EPDM	(blank)	P -All Polish IP -Inside Polish OP -Outside Polish A -Polymer Coating Q -Painting
	20 - 20"		4-4pcs	N-NPTF	15-1.5"		V -Viton	
	30 - 30"		5-5pcs	J -JIS Flange	20-2"	W -Teflon encapsulated Viton	Double Open Ends & 2-222 O-ring Fin/Flat	
	40 - 40"	7-7pcs	A -ANSI Flange	25-2.5"		7		
			D -DIN Flange	30-3"		No Bayonet		
		C -Sanitary Clamp	40-4"		2-226 O-ring Fin/Flat	9		
						2-226 O-ring Fin/Flat		
UFC Cartridge Filter Housing	20"	SUS316	4 pcs	NPTF	2"	EPDM O-ring		

Stainless Steel Cartridge Filter Housings



Components

No.	Description	Qty	No.	Description	Qty
01	End Plate	1	10	Cartridge Squeeze Plate	1
02	Shell	1	11	Spring	3~7
03	Top Cover	1	12	Cartridge Aligning Rod	3~7
04	Flange	1	13	Cartridge Bowl	3~7
05	O-ring	1	14	Cartridge Support Plate	1
06	Mounting Leg	4	15	Nut	1, 3
07	Port (Inlet / Outlet)	2	16	Screw Stay	1, 3
08	Vent	1	17	Round Nut	1, 3
09	Drain	1	18	Clamp	1

Dimensions

Model	A	B	C	ØD	E	F	ØJ	ØK	M	N3	N4	Flow Rate	G. Weight	Volume
UFC10 3/4	280	120	625	180	300	160	9	236	85	1/4"	3/4"	0 ~ 15 GPM / 0 ~ 3 m ³ /hr	15kg	14L
UFC20 3/4	280	120	890	180	300	160	9	236	85	1/4"	3/4"	0 ~ 30 GPM / 0 ~ 6 m ³ /hr	18kg	21L
UFC30 3/4	280	120	1145	180	300	160	9	236	85	1/4"	3/4"	0 ~ 45 GPM / 0 ~ 9 m ³ /hr	20kg	28L
UFC10 5/7	280	120	625	232	352	160	9	288	85	1/4"	3/4"	0 ~ 35 GPM / 0 ~ 7 m ³ /hr	21kg	23L
UFC20 5/7	280	120	890	232	352	160	9	288	85	1/4"	3/4"	0 ~ 70 GPM / 0 ~ 14 m ³ /hr	25kg	34L
UFC30 5/7	280	120	1145	232	352	160	9	288	85	1/4"	3/4"	0 ~ 105 GPM / 0 ~ 21 m ³ /hr	28kg	45L
UFC40 5/7	280	120	1400	232	352	160	9	288	85	1/4"	3/4"	0 ~ 140 GPM / 0 ~ 28 m ³ /hr	31kg	55L

UNIT : mm

Customized housings are available on requests.

Actual flow rates will be determined on element selection and fluid viscosity.

Stainless Steel High Pressure Cartridge Filter Housings

Grace Stainless Steel High Pressure Cartridge Filter Housings are suitable for a wide variety of filtration applications requiring high temperature and operating pressure. The CE registered products are designed with swing bolts closure and hinged covers, making element change out quick and easy. Manufactured by high quality workmanship, the housings accept different end cap styles of filter cartridges in either DOE or SOE, providing economic alternatives of filtration processes.



Applications

Pre RO, Household Water Filtration, Chemicals, Electronics, Food & Beverage, Cooling Water Filtration

Operation Data

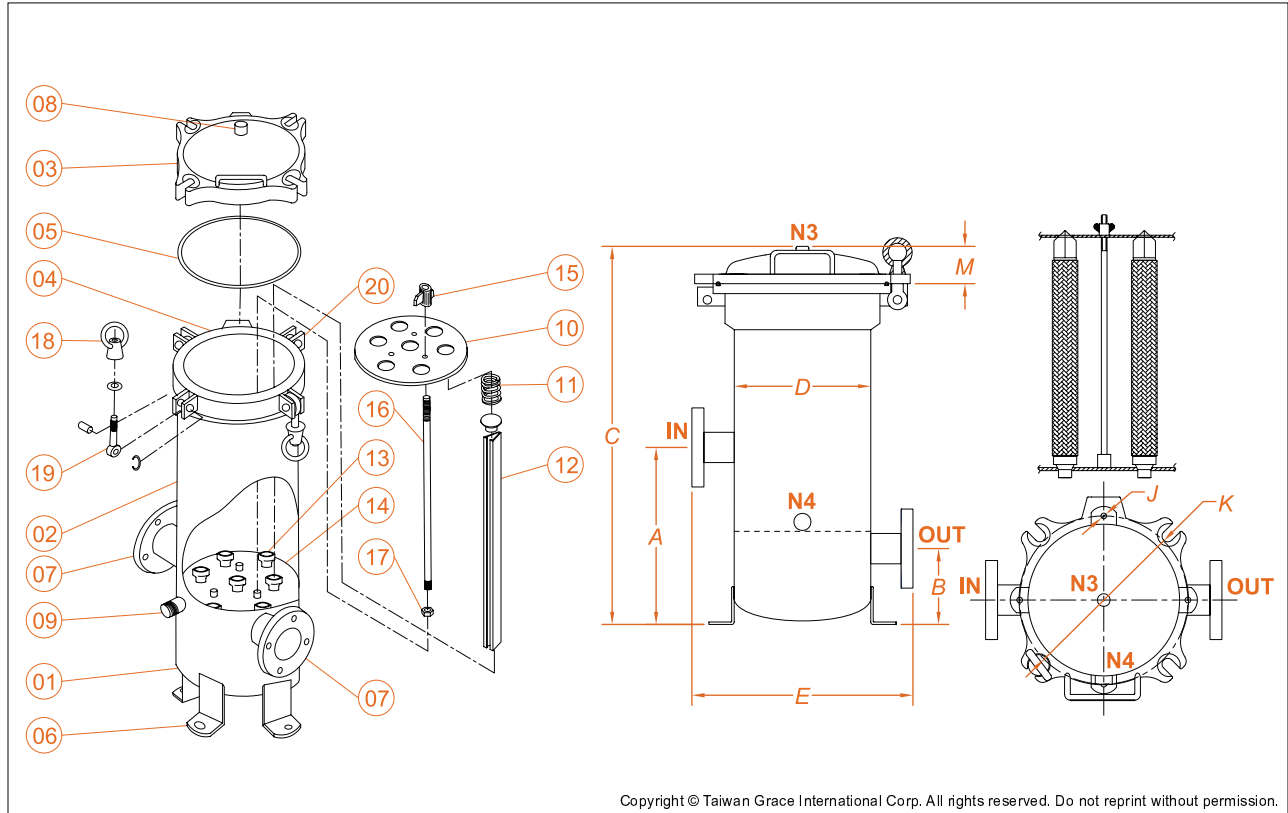
Maximum Operating Temperature : 75°C (167°F) (Base on selection of filter element and O-ring material.)

Maximum Operating Pressure : 10 bar at 75°C (150 psi at 167°F)

Ordering Information

Type	Cartridge Length	Material of Construction	Number of Cartridges	Connection	Inlet/Outlet Size (inch)	O-ring Option	Cartridge End Cap	Option
UFCG High Pressure Cartridge Filter Housing	10 - 10"	4 - SUS304 6 - SUS316 7 - SUS316L	3-3pcs	P -PTF	10 -1"	E -EPDM V -Viton W -Teflon encapsulated Viton	(blank) Flat Gasket Double Open Ends & 2-222 O-ring Fin/Flat 7 No Bayonet 2-226 O-ring Fin/Flat 9 2-226 O-ring Fin/Flat	P -All Polish IP -Inside Polish OP -Outside Polish A -Polymer Coating Q -Painting
	20 - 20"		4-4pcs	N -NPTF	15 -1.5"			
	30 - 30"		5-5pcs	B -BSPF	20 -2"			
	40 - 40"		7-7pcs	J -JIS Flange	25 -1.5"			
			8-8pcs	A -ANSI Flange	30 -3"			
	12-12pcs		D -DIN Flange	40 -4"				
				C -Sanitary Clamp				
UFCG High Pressure Cartridge Filter Housing	20	6	4	N	20	E		
	20"	SUS316	4 pcs	NPTF	2"	EPDM O-ring		

Stainless Steel High Pressure Cartridge Filter Housings



Copyright © Taiwan Grace International Corp. All rights reserved. Do not reprint without permission.

Components

No.	Description	Qty	No.	Description	Qty
01	End Plate	1	12	Cartridge Aligning Rod	3~7
02	Shell	1	13	Cartridge Bowl	3~7
03	Top Cover of Bowl	1	14	Cartridge Support Plate	1
04	Flange	1	15	Nut	1, 3
05	O-ring	1	16	Screw Stay	1, 3
06	Leg Support	4	17	Round Nut	1, 3
07	Port (Inlet / Outlet)	2	18	Eye Nut	4
08	Vent	1	19	Eye Bolt	4
09	Drain	1	20	Eye Bolt Socket	4
10	Cartridge Squeeze Plate	1	21	Handle	1
11	Spring	3~7			

Dimensions

Model	A	B	C	ØD	E	ØJ	ØK	M	N3	N4	Flow Rate	G. Weight	Volume
UFCG10 3/4	280	120	588	181	300	9	236	55	1/4"	3/4"	0 ~ 15 GPM / 0 ~ 3 m ³ /hr	25kg	18L
UFCG20 3/4	280	120	843	181	300	9	236	55	1/4"	3/4"	0 ~ 30 GPM / 0 ~ 6 m ³ /hr	30kg	27L
UFCG30 3/4	280	120	1098	181	300	9	236	55	1/4"	3/4"	0 ~ 45 GPM / 0 ~ 9 m ³ /hr	35kg	36L
UFCG40 3/4	280	120	1353	181	300	9	236	55	1/4"	3/4"	0 ~ 60 GPM / 0 ~ 12 m ³ /hr	40kg	45L
UFCG10 5/7	280	120	598	232	358	9	288	65	1/4"	3/4"	0 ~ 35 GPM / 0 ~ 7 m ³ /hr	30kg	23L
UFCG20 5/7	280	120	853	232	358	9	288	65	1/4"	3/4"	0 ~ 70 GPM / 0 ~ 14 m ³ /hr	35kg	34L
UFCG30 5/7	280	120	1108	232	358	9	288	65	1/4"	3/4"	0 ~105 GPM / 0 ~ 21 m ³ /hr	40kg	45L
UFCG40 5/7	280	120	1363	232	358	9	288	65	1/4"	3/4"	0 ~140 GPM / 0 ~ 28 m ³ /hr	46kg	55L
UFCG20 8/12	700	350	1228	305	500	14	410	153	1/2"	1"	0 ~120 GPM / 0 ~ 27 m ³ /hr	52kg	53L
UFCG30 8/12	700	350	1478	305	500	14	410	153	1/2"	1"	0 ~180 GPM / 0 ~ 40 m ³ /hr	77kg	89L
UFCG40 8/12	700	350	1728	305	500	14	410	153	1/2"	1"	0 ~240 GPM / 0 ~ 54 m ³ /hr	85kg	107L

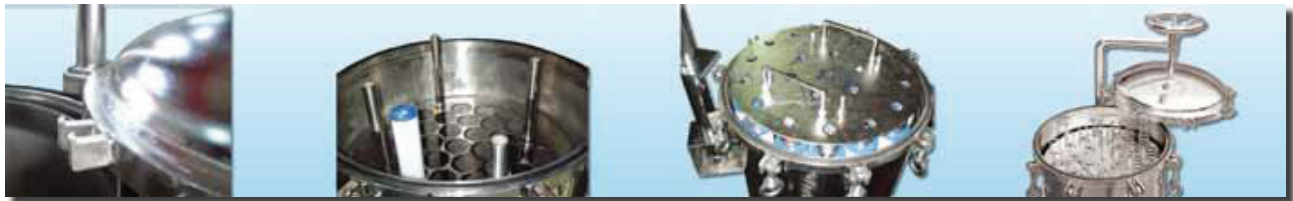
UNIT : mm

Customized housings are available on requests.

Actual flow rates will be determined on element selection and fluid viscosity.

Stainless Steel High Flow Multi-cartridges Filter Housings

Grace Stainless Steel High Flow Multi-cartridges Filter Housings are designed for processes requiring significant flow rate with capacity from 13 rounds to more than 150 rounds of filter cartridges. The design of davit lifter makes top cover removal and element change out quick, easy and safe. Suitable for a broad range of liquid processes, the CE registered multi-cartridges filter housings accept different cartridge end cap styles in DOE and SOE.



Applications

Pre RO, Household Water Filtration, Chemicals, Electronics, Food & Beverage, Cooling Water Filtration

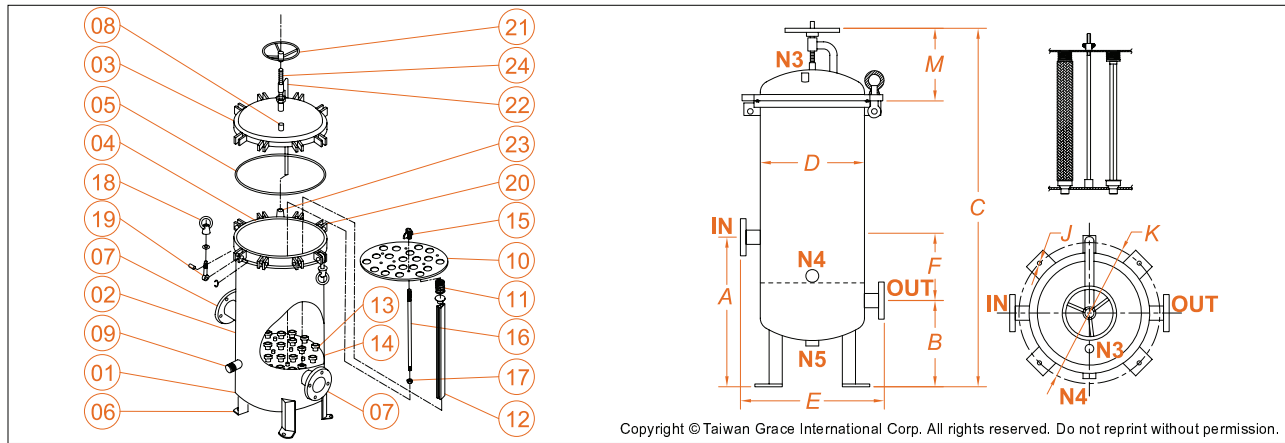
Operation Data

Maximum Operating Temperature : 75°C (167°F) (Base on selection of filter element and O-ring material.)
Maximum Operating Pressure : 10 bar at 75°C (150 psi at 167°F)

Ordering Information

Type	Cartridge Length	Material of Construction	Number of Cartridges	Connection	Inlet/Outlet Size (inch)	O-ring Option	Cartridge End Cap	Option
UFC Cartridge Filter Housing	20 - 20"	4 - SUS304	13-13 pcs	P-PTF N-NPTF B-BSPF J -JIS Flange A -ANSI Flange D -DIN Flange C -Sanitary Clamp	10-1"	E -EPDM V -Viton W -Teflon encapsulated Viton	(blank)	P -All Polish IP -Inside Polish OP -Outside Polish A -Polymer Coating Q -Painting
	30 - 30"	6 - SUS316	14-14 pcs		15-1.5"		Flat Gasket	
	40 - 40"	7 - SUS316L	15-15 pcs		20-2"		Double Open Ends & 2-222 O-ring Fin/Flat	
	173-173 pcs	7	No Bayonet 2-226 O-ring Fin/Flat					
UFC Cartridge Filter Housing	30"	SUS316	46 pcs	A	4"	E		
UFC Cartridge Filter Housing	30"	SUS316	46 pcs	ANSI Flange	4"	EPDM O-ring		

Stainless Steel High Flow Multi-cartridges Filter Housings



Copyright © Taiwan Grace International Corp. All rights reserved. Do not reprint without permission.

Components

No.	Description	Qty	No.	Description	Qty	No.	Description	Qty
01	End Plate	1	09	Drain	1	17	Round Nut	3~8
02	Shell	1	10	Cartridge Squeeze Plate	1	18	Eye Nut	8~32
03	Top Cover of Bowl	1	11	Spring	13~173	19	Eye Bolt	8~32
04	Flange	1	12	Cartridge Aligning Rod	13~173	20	Eye Bolt Socket	8~32
05	O-ring	1	13	Cartridge Bowl	13~173	21	Turntable	1
06	Leg Support	4	14	Cartridge Support Plate	1	22	Davit Lifter	1
07	Port (Inlet / Outlet)	2	15	Nut	3~8	23	Bearing	1
08	Vent	1	16	Screw Stay	3~8	24	Screw	1

Dimensions

Model	A	B	C	ØD	E	F	ØJ	ØK	M	N3	N4 N5	Flow Rate	G. Weight	Volume
UFC20 13/20	700	350	1450	406	606	350	14	516	380	1/2"	1"	0 ~ 200 GPM / 0 ~ 45 m ³ /hr	85kg	139L
UFC30 13/20	700	350	1700	406	606	350	14	516	380	1/2"	1"	0 ~ 300 GPM / 0 ~ 68 m ³ /hr	105kg	165L
UFC40 13/20	700	350	1950	406	606	350	14	516	380	1/2"	1"	0 ~ 400GPM / 0 ~ 90m ³ /hr	125kg	198L
UFC20 21/28	700	350	1455	486	686	350	14	596	385	1/2"	1"	0 ~ 280GPM / 0 ~ 63m ³ /hr	95kg	189L
UFC30 21/28	700	350	1705	486	686	350	14	596	385	1/2"	1"	0 ~ 420GPM / 0 ~ 95m ³ /hr	120kg	239L
UFC40 21/28	700	350	1955	486	686	350	14	596	385	1/2"	1"	0 ~ 560GPM / 0 ~ 127m ³ /hr	145kg	286L
UFC20 29/36	700	350	1480	560	760	350	14	704	410	1/2"	1"	0 ~ 360GPM / 0 ~ 81m ³ /hr	155kg	260L
UFC30 29/36	700	350	1730	560	760	350	14	704	410	1/2"	1"	0 ~ 540GPM / 0 ~ 122m ³ /hr	190kg	327L
UFC40 29/36	800	400	2040	560	760	400	14	704	410	1/2"	1"	0 ~ 720GPM / 0 ~ 163m ³ /hr	225kg	389L
UFC20 37/46	800	400	1540	600	800	400	14	744	410	1/2"	1"	0 ~ 460GPM / 0 ~ 104m ³ /hr	170kg	302L
UFC30 37/46	800	400	1790	600	800	400	14	744	410	1/2"	1"	0 ~ 690GPM / 0 ~ 156m ³ /hr	200kg	401L
UFC40 37/46	800	400	2050	600	800	400	14	744	420	1/2"	1"	0 ~ 920GPM / 0 ~ 209m ³ /hr	230kg	460L
UFC20 47/56	850	450	1635	650	850	400	14	800	455	1/2"	1"	0 ~ 560GPM / 0 ~ 127m ³ /hr	204kg	354L
UFC30 47/56	850	450	1885	650	850	400	14	800	455	1/2"	1"	0 ~ 840GPM / 0 ~ 190m ³ /hr	242kg	484L
UFC40 47/56	850	450	2135	650	850	400	14	800	455	1/2"	1"	0 ~ 1120GPM / 0 ~ 254m ³ /hr	280kg	567L
UFC20 57/81	950	500	1880	762	962	450	14	960	650	1/2"	1 1/2"	0 ~ 810GPM / 0 ~ 184m ³ /hr	322kg	519L
UFC30 57/81	950	500	2130	762	962	450	14	960	650	1/2"	1 1/2"	0 ~ 1215GPM / 0 ~ 276m ³ /hr	365kg	665L
UFC40 57/81	950	500	2380	762	962	450	14	960	650	1/2"	1 1/2"	0 ~ 1620GPM / 0 ~ 368m ³ /hr	408kg	802L
UFC20 82/95	1000	550	2080	900	1100	450	14	1100	700	1/2"	2"	0 ~ 950GPM / 0 ~ 215m ³ /hr	659kg	788L
UFC30 82/95	1000	550	2330	900	1100	450	14	1100	700	1/2"	2"	0 ~ 1425GPM / 0 ~ 323m ³ /hr	687kg	1042L
UFC40 82/95	1000	550	2580	900	1100	450	14	1100	700	1/2"	2"	0 ~ 1900GPM / 0 ~ 431m ³ /hr	715kg	1201L
UFC20 96/135	1100	600	2170	1000	1200	500	14	1200	710	1/2"	2"	0 ~ 1350GPM / 0 ~ 306m ³ /hr	750kg	996L
UFC30 96/135	1100	600	2420	1000	1200	500	14	1200	710	1/2"	2"	0 ~ 2025GPM / 0 ~ 460m ³ /hr	791kg	1350L
UFC40 96/135	1100	600	2670	1000	1200	500	14	1200	710	1/2"	2"	0 ~ 2700GPM / 0 ~ 613m ³ /hr	832kg	1546L
UFC20 136/155	1250	650	2225	1100	1300	600	14	1300	715	1/2"	2"	0 ~ 1550GPM / 0 ~ 352m ³ /hr	990kg	1206L
UFC30 136/155	1250	650	2475	1100	1300	600	14	1300	715	1/2"	2"	0 ~ 2325GPM / 0 ~ 589m ³ /hr	1046kg	1580L
UFC40 136/155	1250	650	2725	1100	1300	600	14	1300	715	1/2"	2"	0 ~ 3100GPM / 0 ~ 704m ³ /hr	1102kg	1817L
UFC20 156/173	1250	650	2230	1200	1400	600	14	1400	720	1/2"	2"	0 ~ 1730GPM / 0 ~ 392m ³ /hr	1129kg	1446L
UFC30 156/173	1250	650	2480	1200	1400	600	14	1400	720	1/2"	2"	0 ~ 2595GPM / 0 ~ 589m ³ /hr	1188kg	1955L
UFC40 156/173	1250	650	2730	1200	1400	600	14	1400	720	1/2"	2"	0 ~ 3460GPM / 0 ~ 785m ³ /hr	1247kg	2238L

UNIT : mm

Customized housings are available on requests.

Actual flow rates will be determined on element selection and fluid viscosity.

Stainless Steel Bag Filter Housings

Grace Stainless Steel Bag Filter Housings are recommended as economic entry models for commercial and general filtration processes with the features of light-weight and low pressure drop. The clamp closure and threaded coupling make closure quick and easy. Height of the housing is adjustable by the design of mounting-legs module. Constructed by 100% stainless steel, the housings offer superior corrosion resistance for a wide range of applications while staying in consistent filtration performance.



Applications

Inks & Polymers Filtration, Paints & Lacquer Filtration, Chemicals, Petrochemicals, Electronics, Waste Water Treatment, Food & Beverage, Pharmaceuticals, Pre RO/DI

Operation Data

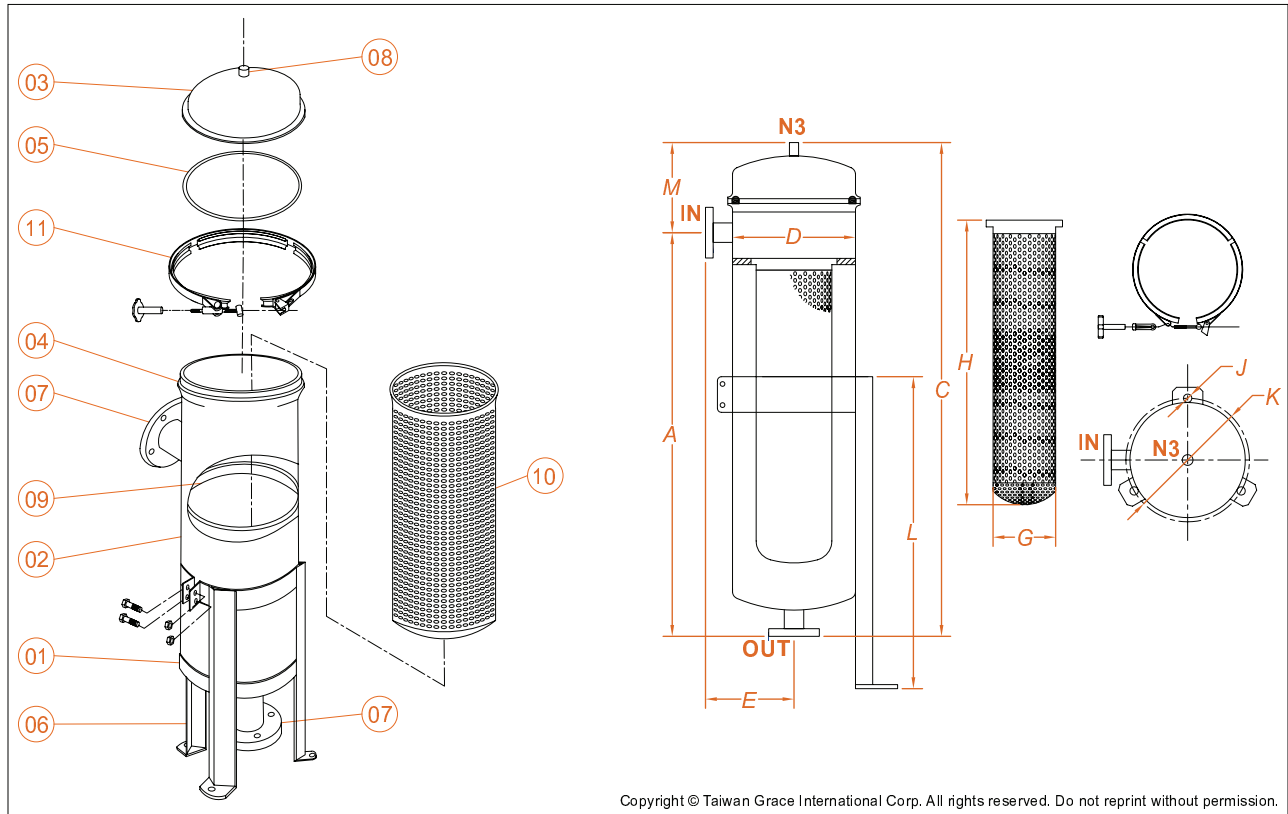
Maximum Operating Temperature : 75°C (167°F) (Base on selection of filter element and O-ring material.)

Maximum Operating Pressure : 7 bar at 75°C (100 psi at 167°F)

Ordering Information

Type	Bag Size	Material of Construction	Number of Bag	Connection	Inlet/Outlet Size (inch)	O-ring Option	Option
UFB Bag Filter Housing	01 - Size 1	4 - SUS304	1 - 1 pce	P -PTF N -NPTF B -BSPF J -JIS Flange A -ANSI Flange D -DIN Flange C -Sanitary Clamp	06 -3/4"	E -EPDM S -Silicone V -Viton W -Teflon encapsulated Viton	P -All Polish IP -Inside Polish OP -Outside Polish Q -Painting
	02 - Size 2				10 -1"		
	03 - Size 3	15 -1.5"					
	04 - Size 4	20 -2"					
UFB Bag Filter Housing	02 Size 2	6 - SUS316	1 pce	J JIS Flange	25 -2.5"	E EPDM O-ring	
					30 -3"		
					40 -4"		

Stainless Steel Bag Filter Housings



Components

No.	Description	Qty
01	End Plate	1
02	Shell	1
03	Top Cover	1
04	Flange	1
05	O-ring	1
06	Mounting-legs Module	1
07	Port (Inlet / Outlet)	2
08	Vent	1
09	Filter Bag Plate	1
10	Basket	1
11	Clamp	1

Dimensions

Model	A	C	ØD	E	ØG	H	ØJ	ØK	L	M	N3	Flow Rate	G.Weight	Volume
UFB01	550	740	232	176	172	350	10	323	520	190	1/4"	0~ 90 GPM / 0~20 m ³ /hr	21kg	27L
UFB02	1005	1195	232	176	172	730	10	323	520	190	1/4"	0~200 GPM / 0~45 m ³ /hr	26kg	46L
UFB03	360	538	180	150	98	200	10	252	350	178	1/4"	0~ 20 GPM / 0~4.5 m ³ /hr	14kg	11L
UFB04	495	673	180	150	98	310	10	252	350	178	1/4"	0~ 45 GPM / 0~10 m ³ /hr	15KG	14L

UNIT : mm

Dimension K will lead to the differences in size from the drawing due to the elasticity of leg support.

Customized housings are available on requests.

Actual flow rates will be determined on element selection and fluid viscosity.



Stainless Steel High Pressure Bag Filter Housings

Grace Stainless Steel High Pressure Bag Filter Housings are manufactured by heavy-duty stainless steel with advantages of superior chemical resistance and high pressure endurance. Height of the housing is adjustable by the design of mounting- legs module, offering flexible and adaptable installation. Symmetric swing bolts sitting around the top cover provide convenient top cover removal, better sealing performance and enhanced safety.



Applications

Inks & Polymers Filtration, Paints & Lacquer Filtration, Chemicals, Petrochemicals, Electronics, Waste Water Treatment, Food & Beverage, Pharmaceuticals, Pre RO

Operation Data

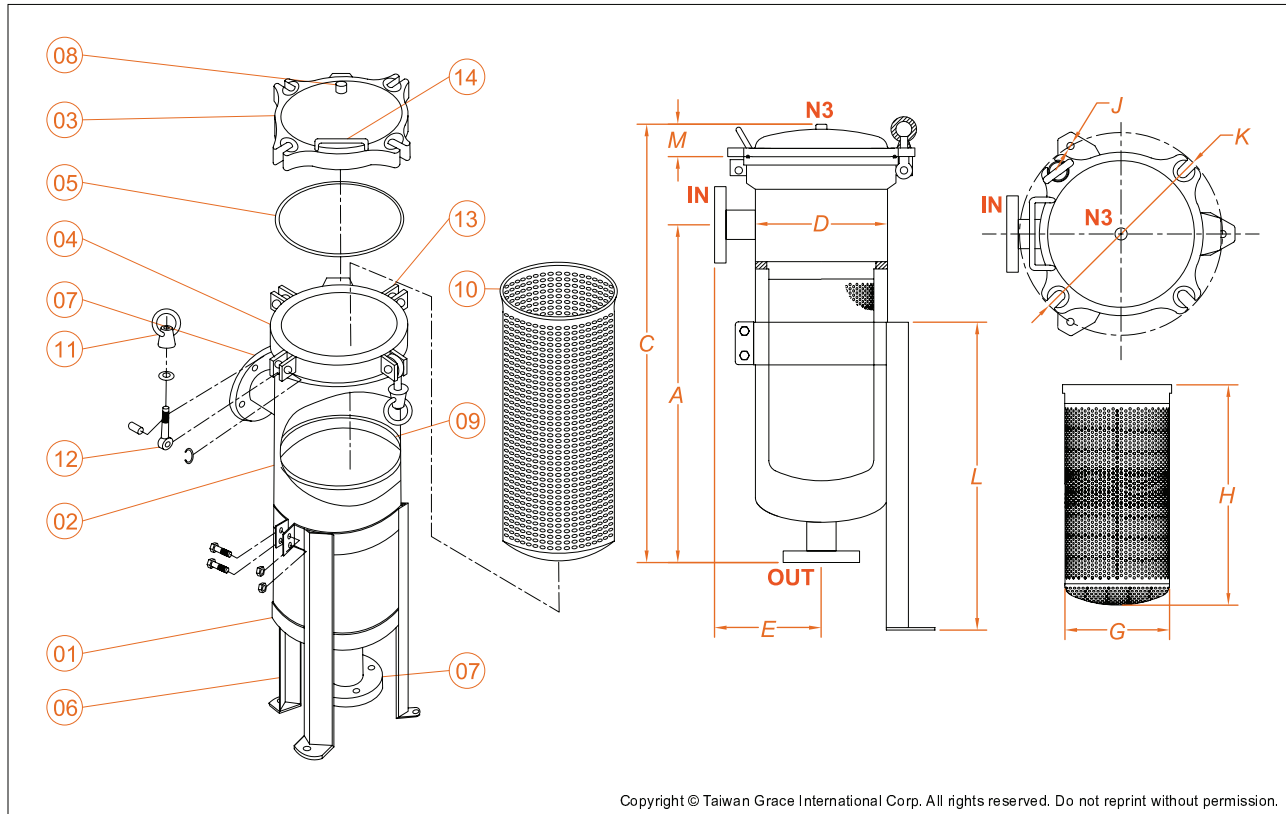
Maximum Operating Temperature : 75°C (167°F) (Base on selection of filter element and O-ring material.)

Maximum Operating Pressure : 10 bar at 75°C (150 psi at 167°F)

Ordering Information

Type	Bag Size	Material of Construction	Number of Bag	Connection	Inlet/Outlet Size (inch)	O-ring Option	Option
UFBG High Pressure Bag Filter Housing	01 - Size 1	4 - SUS304	1 - 1 pce	P -PTF	06 -3/4"	E -EPDM S -Silicone V -Viton W -Teflon encapsulated Viton	P -All Polish IP -Inside Polish OP -Outside Polish Q -Painting
	02 - Size 2	6 - SUS316		N -NPTF	10 -1"		
	03 - Size 3	6 - SUS316		B -BSPF	15 -1.5"		
	04 - Size 4	7 - SUS316L		J -JIS Flange	20 -2"		
				A -ANSI Flange	25 -2.5"		
				D -DIN Flange	30 -3"		
				C -Sanitary Clamp	40 -4"		
UFBG High Pressure Bag Filter Housing	02 Size 2	6 SUS316	1 1 pce	J JIS Flange	20 2"	E EPDM O-ring	

Stainless Steel High Pressure Bag Filter Housings



Components

No.	Description	Qty	No.	Description	Qty
01	End Plate	1	08	Vent	1
02	Shell	1	09	Filter Bag Plate	1
03	Top Cover	1	10	Basket	1
04	Flange	1	11	Eye Nut	3, 4
05	O-ring	1	12	Eye Bolt	3, 4
06	Mounting-legs Module	1	13	Eye Bolt Socket	3, 4
07	Port (Inlet / Outlet)	2	14	Handle	1

Dimensions

Model	A	C	ØD	E	ØG	H	ØJ	ØK	L	M	N3	Flow Rate	G. Weight	Volume
UFBG01	550	740	210	168	172	350	10	332	504	65	1/4"	0~ 90 GPM / 0~20 m ³ /hr	34kg	23L
UFBG02	930	1120	210	168	172	730	10	332	704	65	1/4"	0~200 GPM / 0~45 m ³ /hr	43kg	37L
UFBG03	350	495	140	135	97	200	10	211	350	40	1/4"	0~ 20 GPM / 0~4.5 m ³ /hr	18kg	6.3L
UFBG04	450	595	140	135	97	310	10	211	350	40	1/4"	0~ 45 GPM / 0~10 m ³ /hr	21kg	7.8L

UNIT : mm

Dimension K will lead to the differences in size from the drawing due to the elasticity of leg support.

Customized housings are available on requests.

Actual flow rates will be determined on element selection and fluid viscosity.



Stainless Steel Top-loading Bag Filter Housings

Grace Stainless Steel Top-loading Bag Filter Housings are manufactured by heavy-duty stainless steel components to meet the most demanding applications. The top-loading design highly utilizes the filter housings with results of minimum headroom of unfiltered liquid, and high filtration performance. Height of the housing is adjustable by the design of mounting-legs module, making installation flexible and adaptable. Swing bolt closure enables the housing to withstand higher pressure and perform better sealing.



Applications

Inks & Polymers Filtration, Paints & Lacquer Filtration, Chemicals, Petrochemicals, Electronics, Waste Water Treatment, Food & Beverage, Pharmaceuticals, Pre RO

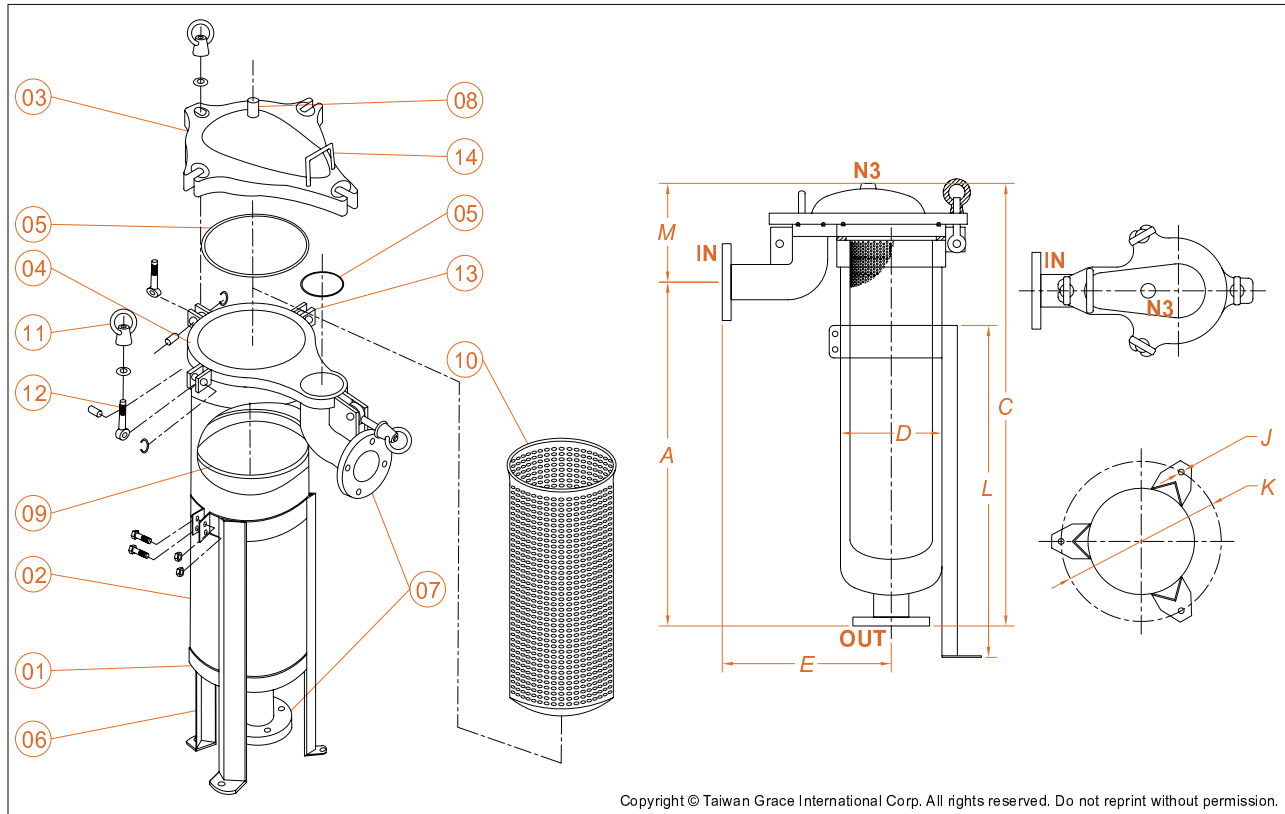
Operation Data

Maximum Operating Temperature : 75°C (167°F) (Base on selection of filter element and O-ring material.)
Maximum Operating Pressure : 10 bar at 75°C (150 psi at 167°F)

Ordering Information

Type	Bag Size	Material of Construction	Number of Bag	Connection	Inlet/Outlet Size (inch)	O-ring Option	Option
UFBT Top-loading Bag Filter Housing	01 - Size 1 02 - Size 2	4 - SUS304 6 - SUS316 7 - SUS316L	1 - 1 pce	P -PTF N -NPTF B -BSPF J -JIS Flange A -ANSI Flange D -DIN Flange C -Sanitary Clamp	20 -2" 25 -2.5"	E -EPDM S -Silicone V -Viton W -Teflon encapsulated Viton	P -All Polish IP -Inside Polish OP -Outside Polish Q -Painting
UFBT Top-loading Bag Filter Housing	02 Size 2	6 SUS316	1 1 pce	J JIS Flange	20 2"	E EPDM O-ring	

Stainless Steel Top-loading Bag Filter Housings



Components

No.	Description	Qty	No.	Description	Qty
01	End Plate	1	08	Vent	1
02	Shell	1	09	Filter Bag Plate	1
03	Top Cover	1	10	Basket	1
04	Flange	1	11	Eye Nut	4
05	O-ring	1	12	Eye Bolt	4
06	Mounting-legs Module	1	13	Eye Bolt Socket	4
07	Port (Inlet / Outlet)	2	14	Handle	1

Dimensions

Model	A	C	ØD	E	ØJ	ØK	L	M	Inlet Outlet	N3	Flow Rate	G. Weight	Volume
UFBT01	385	555	216	270	12	350	504	170	2" Flange	1/2"	0~ 90 GPM / 0~20 m ³ /hr	40kg	16L
UFBT02	735	905	216	270	12	332	704	170	2" Flange	1/2"	0~200 GPM / 0~45 m ³ /hr	48kg	31L
UFBT01	385	585	216	302	12	350	504	200	2.5" Flange	1/2"	0~ 90 GPM / 0~20 m ³ /hr	40kg	16L
UFBT02	735	935	216	302	12	332	704	200	2.5" Flange	1/2"	0~200 GPM / 0~45 m ³ /hr	48kg	31L

UNIT : mm

Dimension K will lead to the differences in size from the drawing due to the elasticity of leg support.

Customized housings are available on requests.

Actual flow rates will be determined on element selection and fluid viscosity.



Stainless Steel High Flow Multi-bags Filter Housings

Grace Stainless Steel High Flow Multi-bags Filter Housings are manufactured by heavy-duty stainless steel components to meet demanding applications. With big capacity of multi-rounds filter bags, the housings are able to process significant flow rate while remaining high filtration performance. The incorporation of davit lifter and turntable makes operation convenient and safe. Closing by symmetric swing bolts sitting around top cover, the housings perform excellent sealing and high pressure withstanding capability.



Applications

Inks & Polymers Filtration, Paints & Lacquer Filtration, Chemicals, Petrochemicals, Electronics, Waste Water Treatment, Food & Beverage, Pharmaceuticals, Pre RO

Operation Data

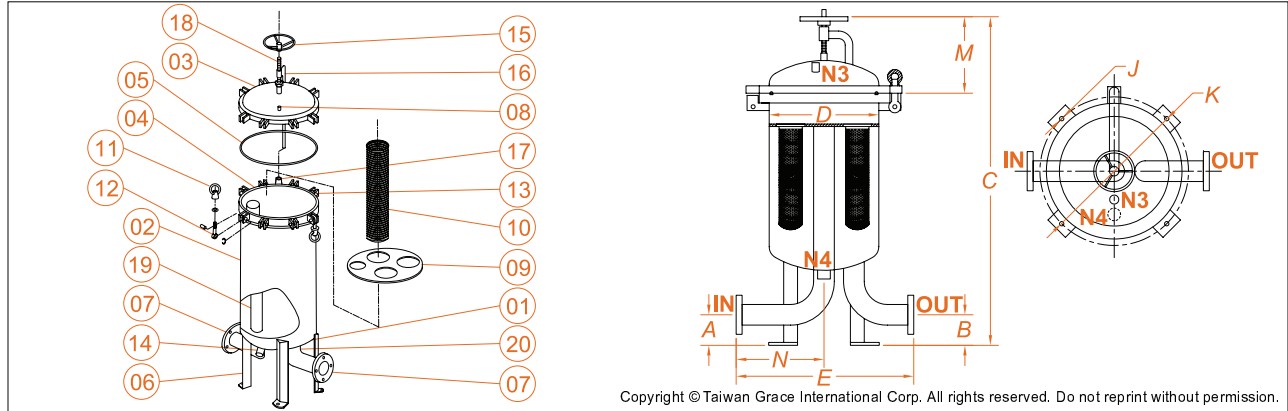
Maximum Operating Temperature : 75°C (167°F) (Base on selection of filter element and O-ring material.)

Maximum Operating Pressure : 10 bar at 75°C (150 psi at 167°F)

Ordering Information

Type	Bag Size	Material of Construction	Number of Bag	Connection	Inlet/Outlet Size (inch)	O-ring Option	Option
UFB Bag Filter Housing	02 - Size 2	4 - SUS304 6 - SUS316 7 - SUS316L	2 - 2 pcs 14 - 14 pcs	P -PTF N -NPTF B -BSPF J -JIS Flange A -ANSI Flange D -DIN Flange C -Sanitary Clamp	30-3" 90-9" Z-10"	E -EPDM S -Silicone V -Viton W -Teflon encapsulated Viton	P -All Polish IP -Inside Polish OP -Outside Polish Q -Painting
UFB Bag Filter Housing	02 Size 2	6 SUS316	10 10 pcs	J JIS Flange	80 8"	E EPDM O-ring	

Stainless Steel High Flow Multi-bags Filter Housings



Components

No.	Description	Qty	No.	Description	Qty
01	End Plate	1	11	Eye Nut	8~28
02	Shell	1	12	Eye Bolt	8~28
03	Top Cover	1	13	Eye Bolt Socket	8~28
04	Flange	1	14	Drain	1
05	O-ring	1	15	Turntable	1
06	Mounting-legs Module	1	16	Davit Lifter	1
07	Port (Inlet / Outlet)	2	17	Bearing	1
08	Vent	1	18	Screw	1
09	Filter Bag Plate	1	19	Pipe	1
10	Basket	2~14	20	Curve Pipe	2

Dimensions

Model	Port	A	B	C	ØD	E	ØJ	ØK	M	N	N3	N4	Flow Rate	G. Weight	Volume
UFB02 2	3"F	108	108	1423	406	584	14	516	370	254	1/2"	2"	0 ~ 400GPM / 0 ~ 90m ³ /hr	97kg	116L
UFB02 2	4"F	127	127	1482	406	660	14	516	370	292	1/2"	2"	0 ~ 400GPM / 0 ~ 90m ³ /hr	102kg	117L
UFB02 3	3"F	108	108	1485	508	686	14	618	407	343	1/2"	2"	0 ~ 600GPM / 0 ~ 135m ³ /hr	125kg	188L
UFB02 3	4"F	127	127	1544	508	724	14	618	407	343	1/2"	2"	0 ~ 600GPM / 0 ~ 135m ³ /hr	130kg	189L
UFB02 4	3"F	108	108	1493	560	698	14	704	410	330	1/2"	2"	0 ~ 800GPM / 0 ~ 180m ³ /hr	161kg	244L
UFB02 4	4"F	127	127	1552	560	737	14	704	410	330	1/2"	2"	0 ~ 800GPM / 0 ~ 180m ³ /hr	169kg	245L
UFB02 4	6"F	152	152	1662	600	876	14	744	415	356	1/2"	2"	0 ~ 800GPM / 0 ~ 180m ³ /hr	206kg	279L
UFB02 5	3"F	108	108	1493	560	698	14	704	410	330	1/2"	2"	0 ~ 800GPM / 0 ~ 180m ³ /hr	160kg	244L
UFB02 5	4"F	127	127	1552	560	737	14	704	410	330	1/2"	2"	0 ~ 1000GPM / 0 ~ 225m ³ /hr	165kg	278L
UFB02 5	6"F	152	152	1662	600	876	14	744	415	356	1/2"	2"	0 ~ 1000GPM / 0 ~ 225m ³ /hr	206kg	246L
UFB02 6	3"F	108	108	1503	600	724	14	744	415	356	1/2"	2"	0 ~ 1000GPM / 0 ~ 225m ³ /hr	198kg	277L
UFB02 6	4"F	127	127	1562	600	763	14	744	415	356	1/2"	2"	0 ~ 1200GPM / 0 ~ 270m ³ /hr	202kg	278L
UFB02 6	6"F	152	152	1662	600	876	14	744	415	356	1/2"	2"	0 ~ 1200GPM / 0 ~ 270m ³ /hr	206kg	279L
UFB02 7	3"F	108	108	1783	762	813	14	962	650	406	1/2"	2"	0 ~ 1200GPM / 0 ~ 270m ³ /hr	430kg	488L
UFB02 7	4"F	127	127	1842	762	864	14	962	650	406	1/2"	2"	0 ~ 1400GPM / 0 ~ 315m ³ /hr	440kg	489L
UFB02 7	6"F	152	152	1947	762	927	14	962	650	406	1/2"	2"	0 ~ 1400GPM / 0 ~ 315m ³ /hr	450kg	491L
UFB02 7	8"F	184	184	2048	762	991	14	962	650	432	1/2"	2"	0 ~ 1400GPM / 0 ~ 315m ³ /hr	440kg	493L
UFB02 8	4"F	127	127	1783	762	864	14	962	591	432	1/2"	2"	0 ~ 1400GPM / 0 ~ 315m ³ /hr	450kg	489L
UFB02 8	6"F	152	152	1842	762	991	14	962	545	432	1/2"	2"	0 ~ 1600GPM / 0 ~ 360m ³ /hr	450kg	491L
UFB02 8	8"F	184	184	2048	762	1047	14	962	650	432	1/2"	2"	0 ~ 1600GPM / 0 ~ 360m ³ /hr	460kg	493L
UFB02 9	6"F	152	152	1972	813	1016	14	1013	665	457	1/2"	2"	0 ~ 1600GPM / 0 ~ 360m ³ /hr	520kg	564L
UFB02 9	8"F	184	184	2073	813	1016	14	1013	665	457	1/2"	2"	0 ~ 1800GPM / 0 ~ 405m ³ /hr	530kg	566L
UFB02 10	6"F	152	152	2012	864	1092	14	1064	685	483	1/2"	2"	0 ~ 1800GPM / 0 ~ 405m ³ /hr	590kg	662L
UFB0210	8"F	184	184	2113	864	1067	14	1064	685	483	1/2"	2"	0 ~ 2000GPM / 0 ~ 450m ³ /hr	600kg	664L
UFB02 10	10"F	216	216	2267	965	1219	14	1215	710	533	1/2"	2"	0 ~ 2000GPM / 0 ~ 450m ³ /hr	715kg	854L
UFB02 12	8"F	184	184	2158	965	1130	14	1215	710	533	1/2"	2"	0 ~ 2400GPM / 0 ~ 540m ³ /hr	725kg	852L
UFB02 12	10"F	216	216	2267	965	1219	14	1215	710	533	1/2"	2"	0 ~ 2400GPM / 0 ~ 540m ³ /hr	735kg	854L
UFB02 14	10"F	216	216	2267	965	1219	14	1215	710	533	1/2"	2"	0 ~ 2800GPM / 0 ~ 630m ³ /hr	810kg	942L

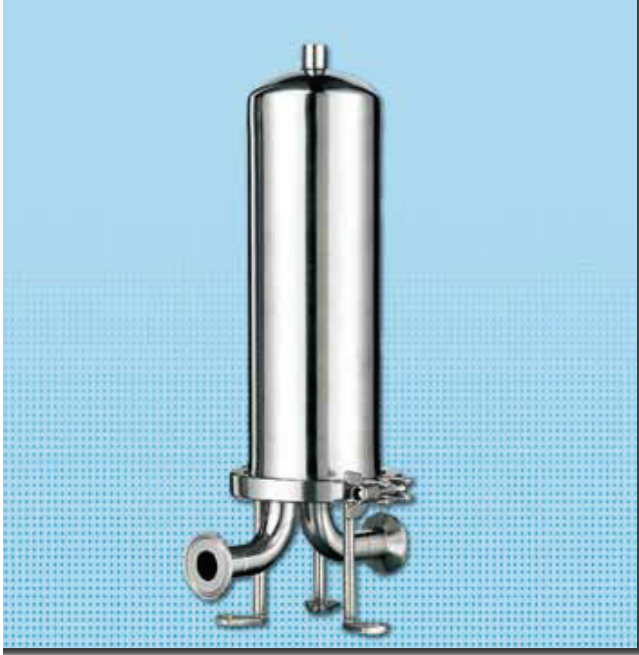
UNIT : mm

Customized housings are available on requests.

Actual flow rates will be determined on element selection and fluid viscosity.

Stainless Steel Sanitary Single Cartridge Filter Housings

Grace Stainless Steel Sanitary Single Cartridge Filter Housings have special surface finish of mechanical polish, making the housings ideal choices for demanding processes requiring high purity. The smooth surface retains the lowest content of fine dust in fluid and eliminates possible contaminants while processing. With features of easy draining and clamp closure, the housings are advantaged of convenient operation and quick element change out.



Applications

Pre RO/DI, Laboratory Facilities, Chemicals, Electronics, Food & Beverage, Pharmaceuticals, Process Gases

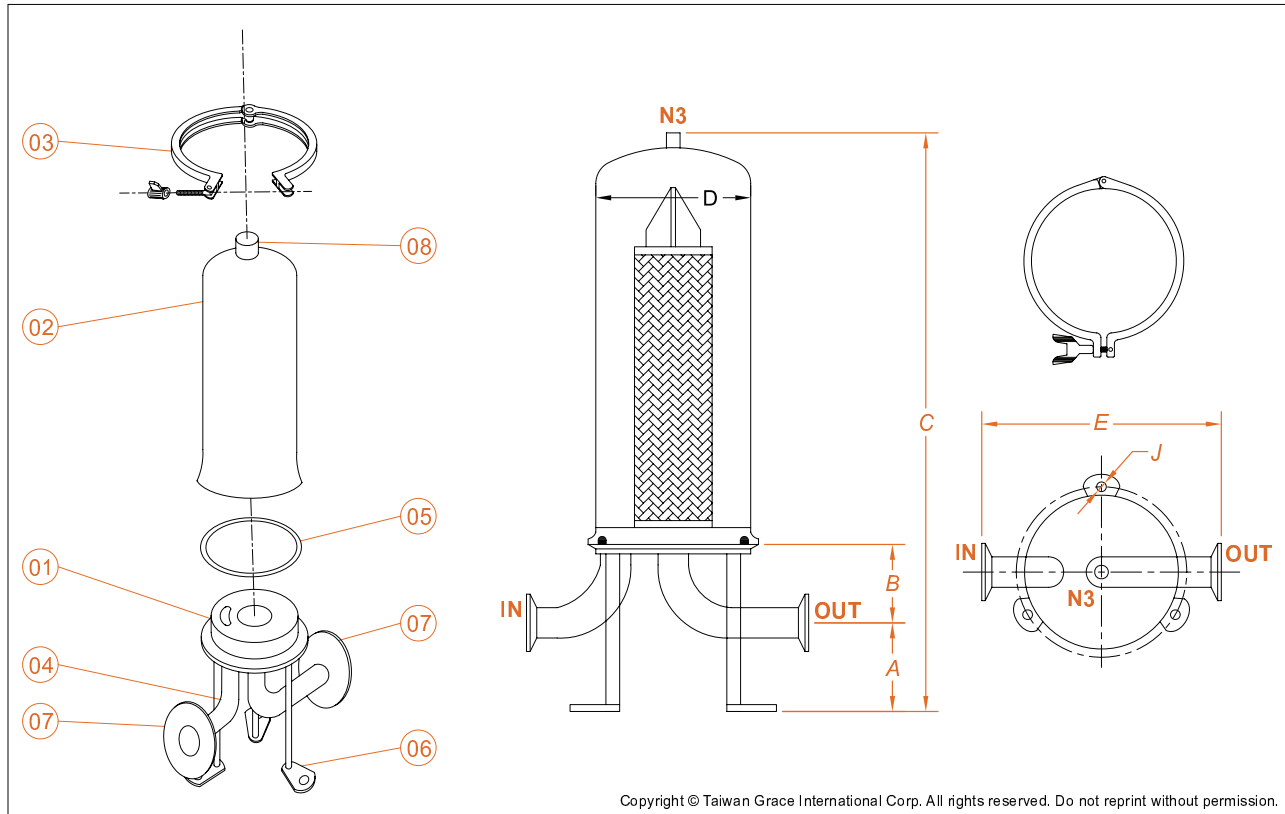
Operation Data

Maximum Operating Temperature : 75°C (167°F) (Base on selection of filter element and O-ring material.)
Maximum Operating Pressure : 7 bar at 75°C (100 psi at 167°F)

Ordering Information

Type	Cartridge Length	Material of Construction	Number of Cartridges	Connection	Inlet/Outlet Size (inch)	O-ring Option	Cartridge End Cap
UFCP Sanitary Cartridge Filter Housing	10 - 10"	4 - SUS304	1 - 1pce	P-PTF	06-3/4"	E -EPDM S-Silicone T -Teflon W -Teflon encapsulated Viton	0 Flat Gasket Double Open Ends
	20 - 20"	6 - SUS316		J -JIS Flange			8 2-222 O-ring Fin/Flat
	30 - 30"	7 - SUS316L		A -ANSI Flange D -DIN Flange C -Sanitary Clamp			9 2-226 O-ring Fin/Flat
UFCP Sanitary Cartridge Filter Housing	30"	6 SUS316	1 pce	C Sanitary Clamp	10 1"	E EPDM O-ring	7 No Bayonets 2-226 O-ring Fin/Flat

Stainless Steel Sanitary Single Cartridge Filter Housings



Components

No.	Description	Qty	No.	Description	Qty
01	Base	1	05	O-ring	1
02	Shell	1	06	Mounting Leg	3
03	Clamp	1	07	Port(Inlet/Outlet)	2
04	Curve Pipe	2	08	Vent	1

Dimensions

Model	A	B	C	ØD	E	ØJ	N3	Flow Rate	G. Weight
UFCP10 1	55	57	460	106	199	10	1/4"	0 ~ 5 GPM / 0 ~ 1 m ³ /hr	4.5kg
UFCP20 1	55	57	710	106	199	10	1/4"	0~ 10 GPM / 0 ~ 2 m ³ /hr	6.0kg
UFCP30 1	55	57	960	106	199	10	1/4"	0~ 15 GPM / 0 ~ 3 m ³ /hr	7.5kg

UNIT : mm

Customized housings are available on requests.

Actual flow rates will be determined on element selection and fluid viscosity.



Stainless Steel Sanitary Cartridge Filter Housings

Grace Stainless Steel Sanitary Cartridge Housings have surface finish of mechanical polish, making the housings ideal for demanding processes requiring high purity. The housings can be disassembled in all parts, eliminating possibility of retained particles and making more effective cleaning. The design of clamp closure advantages the housings with convenient operation and quick element change out. Manufactured by 100% stainless steel, the housings are competent to work in a wide range of critical applications.



Applications

Pre RO/DI, Laboratory Facilities, Chemicals, Electronics, Food & Beverage, Pharmaceuticals

Operation Data

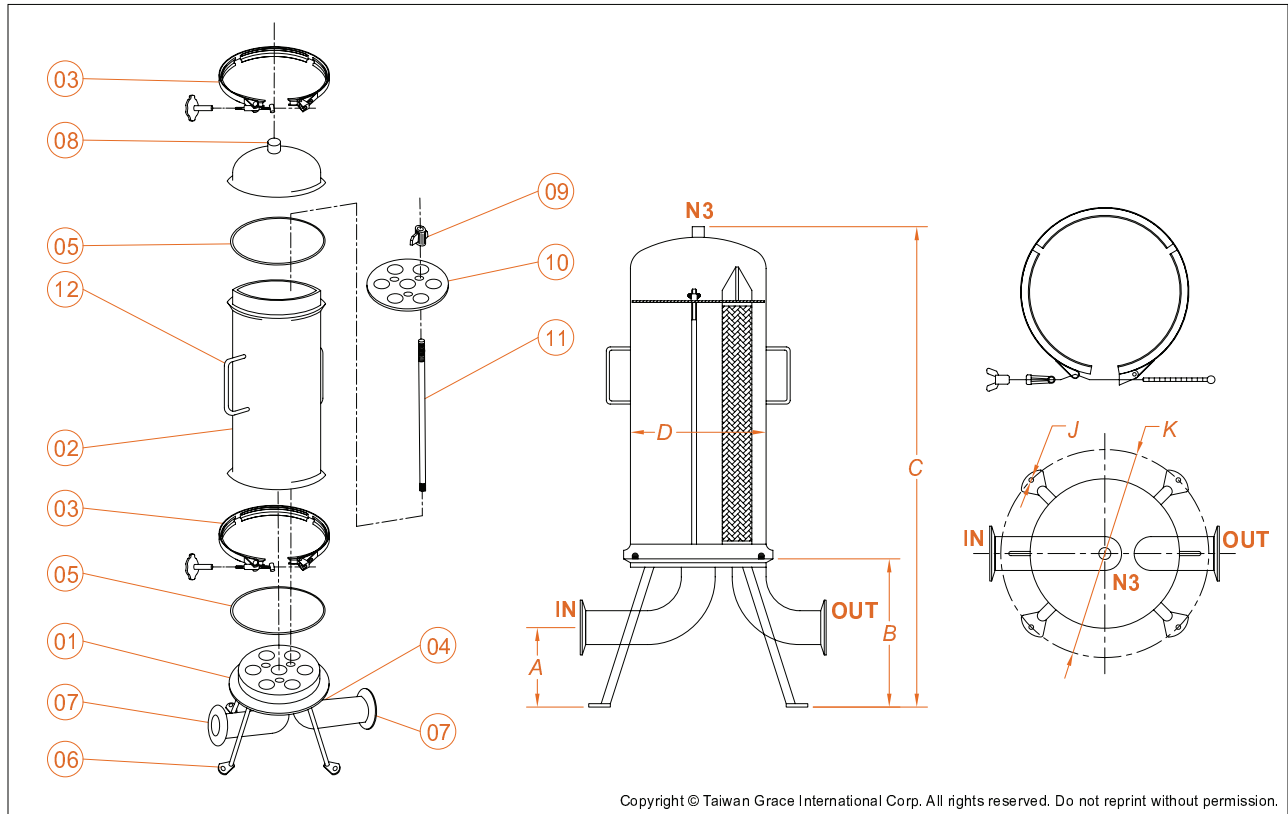
Maximum Operating Temperature : 75°C (167°F) (Base on selection of filter element and O-ring material.)

Maximum Operating Pressure : 7 bar at 75°C (100 psi at 167°F)

Ordering Information

Type	Cartridge Length	Material of Construction	Number of Cartridges	Connection	Inlet/Outlet Size (inch)	O-ring Option	Cartridge End Cap
UFCP Sanitary Cartridge Filter Housing	10 - 10"	4 - SUS304	3 - 3 pcs	P-PTF N-NPTF B-BSPF J -JIS Flange A -ANSI Flange D -DIN Flange C -Sanitary Clamp	15-1.5" 20-2"	E -EPDM S-Silicone T -Teflon W -Teflon encapsulated Viton	0 Flat Gasket Double Open Ends
	20 - 20"		4 - 4 pcs				8 2-222 O-ring Fin/Flat
	30 - 30"	6 - SUS316	5 - 5 pcs				9 2-226 O-ring Fin/Flat
	40 - 40"	7 - SUS316L	6 - 6 pcs				7 No Bayonets 2-226 O-ring Fin/Flat
	UFCP Sanitary Cartridge Filter Housing	30 30"	6 SUS316				3 3 pcs

Stainless Steel Sanitary Cartridge Filter Housings



Components

No.	Description	Qty	No.	Description	Qty
01	Base	1	07	Port(Inlet/Outlet)	2
02	Shell	1	08	Vent	1
03	Clamp	1	09	Nut	3
04	Curve Pipe	2	10	Cartridge Squeeze Plate	1
05	O-ring	1	11	Screw Stay	3
06	Mounting Leg	4	12	Handle	2

Dimensions

Model	A	B	C	ØD	ØJ	ØK	N3	Flow Rate	G. Weight
UFCP10 3/6	120	225	631	238	12	368	1/4"	0~ 30 GPM / 0 ~ 7 m ³ /hr	21kg
UFCP20 3/6	120	225	886	238	12	368	1/4"	0~ 60 GPM / 0 ~ 14 m ³ /hr	26kg
UFCP30 3/6	120	225	1136	238	12	368	1/4"	0~ 90 GPM / 0 ~ 20 m ³ /hr	29.5kg
UFCP40 3/6	120	225	1386	238	12	368	1/4"	0~ 120 GPM / 0 ~ 27 m ³ /hr	33kg

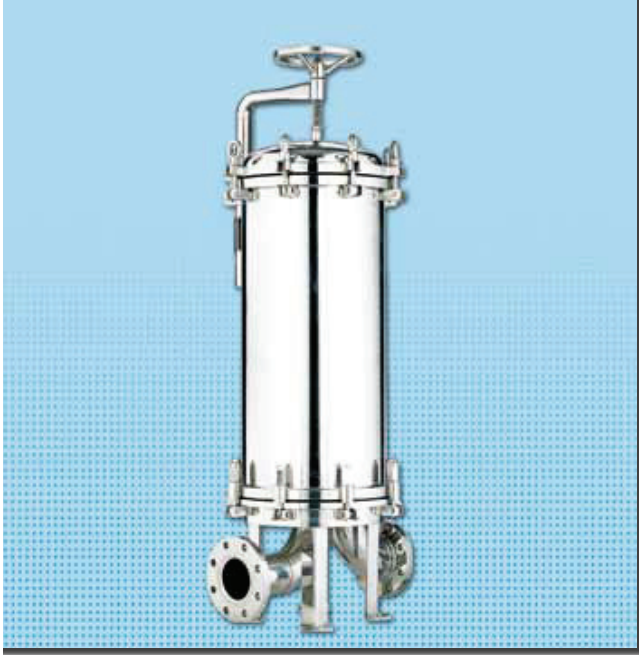
UNIT : mm

Customized housings are available on requests.

Actual flow rates will be determined on element selection and fluid viscosity.

Stainless Steel Sanitary Multi-cartridges Filter Housings

Grace Stainless Steel Sanitary Cartridge Housings have special surface finish of mechanical polish, making the housings ideal for demanding processes requiring high purity. With high flow capacity, the housings provide effective solutions for critical applications while assuring high quality of filtration performance. All parts of the housings can be disassembled, eliminating remaining particles and making more effective cleaning. The innovative features of davit lifter and swing bolt closure make operation and element change out convenient, safe and easy.



Applications

Pre RO/DI, Laboratory Facilities, Chemicals, Electronics, Food & Beverage, Pharmaceuticals

Operation Data

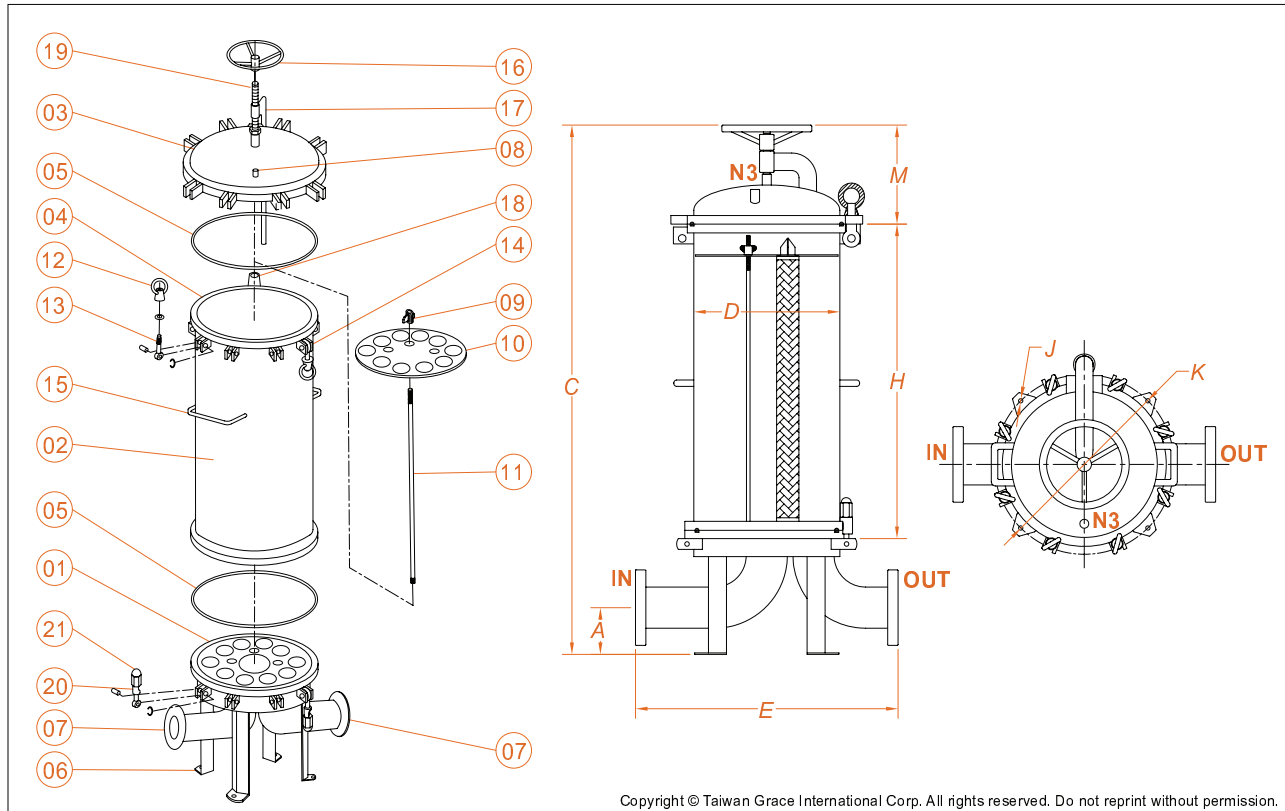
Maximum Operating Temperature : 75°C (167°F) (Base on selection of filter element and O-ring material.)

Maximum Operating Pressure : 7 bar at 75°C (100 psi at 167°F)

Ordering Information

Type	Cartridge Length	Material of Construction	Number of Cartridges	Connection	Inlet/Outlet Size (inch)	O-ring Option	Cartridge End Cap
UFCP Sanitary Cartridge Filter Housing	10 - 10"	4 - SUS304 6 - SUS316 7 - SUS316L	8-8pcs	P-PTF N-NPTF B-BSPF J -JIS Flange A -ANSI Flange D -DIN Flange C -Sanitary Clamp	20-2" 30-3"	E -EPDM S-Silicone T -Teflon W -Teflon encapsulated Viton	0 Flat Gasket Double Open Ends
	20 - 20"		10-10pcs				8 2-222 O-ring Fin/Flat
	30 - 30"		12-12pcs				9 2-226 O-ring Fin/Flat
	40 - 40"		16-16pcs				7 No Bayonets 2-226 O-ring Fin/Flat
			20-20pcs				
	22-22pcs						
UFCP Sanitary Cartridge Filter Housing	30 30"	6 SUS316	16 16 pcs	C Sanitary Clamp	30 3"	E EPDM O-ring	9 2-226 O-ring Fin/Flat

Stainless Steel Sanitary Multi-cartridges Filter Housings



Components

No.	Description	Qty	No.	Description	Qty
01	Base	1	12	Eye Nut	8
02	Shell	1	13	Eye Bolt	8
03	Top Cover	1	14	Eye Bolt Socket	8
04	Flange	1	15	Handle	2
05	O-ring	2	16	Turntable	1
06	Mounting Leg	4	17	Davit Lifter	1
07	Port(Inlet/Outlet)	2	18	Bearing	1
08	Vent	1	19	Screw	1
09	Nut	8	20	Swing Bolt	8
10	Cartridge Squeeze Plate	1	21	Nut	8
11	Screw Stay	3			

Dimensions

Model	A	C	ØD	E	H	ØJ	ØK	M	N3	Flow Rate	G. Weight
UFCP30 8	130	1570	350	500	850	14	445	375	1/2"	0~ 120 GPM / 0 ~ 27 m ³ /hr	116kg
UFCP30 10	130	1570	350	500	850	14	445	375	1/2"	0~ 150 GPM / 0 ~ 34 m ³ /hr	116kg
UFCP30 12	150	1590	406	600	850	14	500	375	1/2"	0~ 180 GPM / 0 ~ 40 m ³ /hr	150kg
UFCP30 16	150	1590	406	600	850	14	500	375	1/2"	0~ 240 GPM / 0 ~ 54 m ³ /hr	150kg
UFCP30 20	150	1610	486	700	850	14	580	395	1/2"	0~ 300 GPM / 0 ~ 68 m ³ /hr	185kg
UFCP30 22	150	1610	486	700	850	14	580	395	1/2"	0~ 330 GPM / 0 ~ 75 m ³ /hr	185kg

UNIT : mm

Customized housings are available on requests.

Actual flow rates will be determined on element selection and fluid viscosity.



Plastic Slim Filter Housings

Grace Plastic Slim Filter Housings are available in materials of clear reinforced polypropylene and opaque styrene acrylonitrile (SAN), providing economic choices for residential filtration and general water applications. All housings are accessible with mounting brackets and suitable for processes with limited installation space. The slim housings are designed with innovative double o-rings sealing, ensuring consistent filtration performance and enhanced safety during processes.

Applications

Household Water Filtration, Chemicals, Laboratory Facilities, Pre RO, Electronics, Food & Beverage

Specifications

Housing Material	Reinforced Polypropylene (blue), Styrene Acrylonitrile (clear)
Cap Material	Reinforced Polypropylene
O-ring	Buna-N

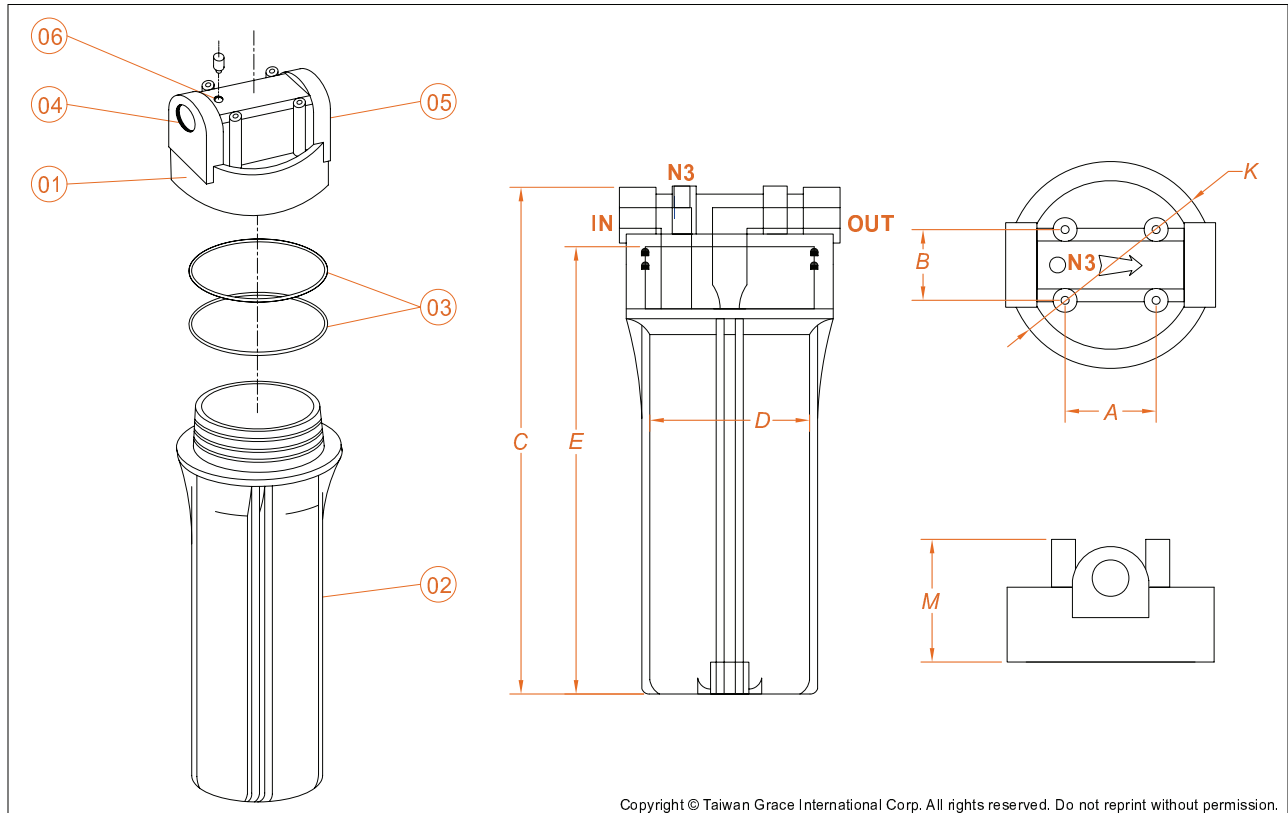
Operation Data

Maximum Operating Temperature : 60°C (140°F)
Maximum Operating Pressure : 8.6 bar(125 psi)

Ordering Information

Type	Cartridge Length inch	Housing Color	Number of O-rings	Cap Color	Vent	Inlet/Outlet Porting (inch)	Inlet/Outlet Brass	O-ring Option	Series
PH Plastic Filter Housing	10 – 10"	C -Clear	2 -Double O-rings	K -Black	V -Vent	N02 - 1/4"NPTF	(blank) No Brass A -Port Brass	B -Buna-N	S -Slim
	20 – 20"	B -Blue		B -Blue	N -No Vent	N03 - 3/8"NPTF			
		W -White		W -White		N04 - 1/2"NPTF			
						N06 - 3/4"NPTF			
PH Plastic Filter Housing	10 10"	C Clear	2 Double O-ring	K Black	V Vent	N06 3/4" NPT	B Buna-N	S Slim	

Plastic Slim Filter Housings



Components

No.	Description	Qty
01	Cap	1
02	Filter Housing	1
03	O-ring	2
04	Port(Inlet)	1
05	Port(Outlet)	1
06	Vent	1

Dimensions

Model	A	B	C	ØD	E	ØK	M	Flow Rate	G. Weight
PH10 S	40	33	305	80	270	115	74	0 ~ 5 GPM / 0 ~ 1.1 m ³ /hr	0.96kg
PH20 S	40	33	582	80	540	115	83	0 ~ 10 GPM / 0 ~ 2.2 m ³ /hr	1.75kg

UNIT : mm

Customized housings are available on requests.

Actual flow rates will be determined on element selection and fluid viscosity.

Plastic Standard Filter Housings

Grace Plastic Standard Filter Housings are available in materials of clear reinforced polypropylene and opaque styrene acrylonitrile (SAN), providing economic choices for residential, commercial and industrial applications. Clear housings provide great convenience of on-site examination, and opaque housings have excellent chemical resistance. The standard housings are able to accommodate filter cartridges with bigger diameter of 70mm, resulting in bigger flow capacity for various fluid processes.



Applications

Household Water Filtration, Chemicals, Laboratory Facilities, Pre RO, Electronics, Food & Beverage

Specifications

Housing Material	Reinforced Polypropylene (blue), Styrene Acrylonitrile (clear)
Cap Material	Reinforced Polypropylene
O-ring	Buna-N

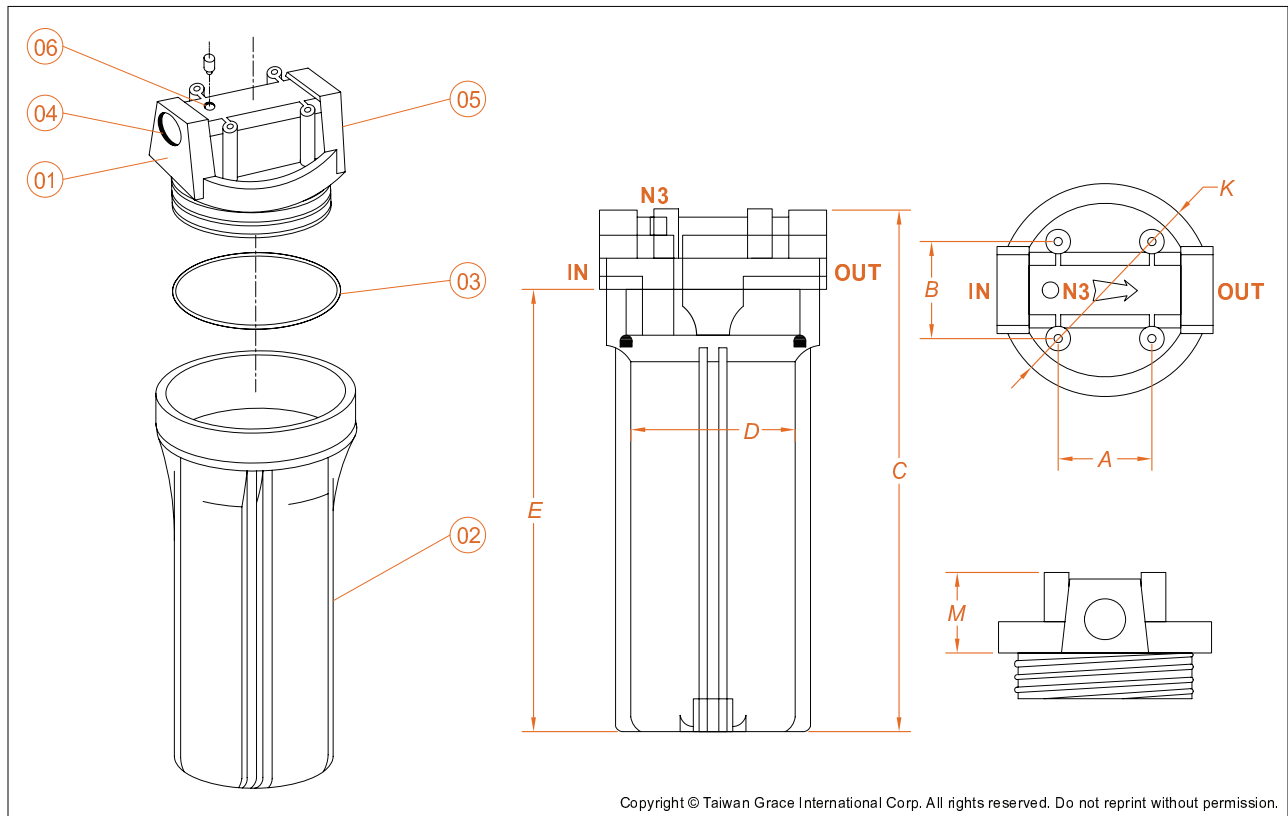
Operation Data

Maximum Operating Temperature : 60°C (140°F)
Maximum Operating Pressure : 8.6 bar(125 psi)

Ordering Information

Type	Cartridge Length inch	Housing Color	Number of O-ring	Cap Color	Vent	Inlet/Outlet Porting (inch)	Inlet/Outlet Brass	O-ring Option	Series
PH Plastic Filter Housing	10 – 10"	C-Clear	1-Single O-ring	K-Black	V-Vent	N04 - 1/2"NPTF N06 - 3/4"NPTF	(blank) No Brass	B-Buna-N	M Standard
	20 – 20"	B-Blue W-White		B-Blue W-White	N-No Vent		A-Port Brass		
PH Plastic Filter Housing	10 10"	C Clear	1 Single O-ring	K Black	V Vent	N06 3/4" NPT		B Buna-N	M Standard

Plastic Standard Filter Housings



Copyright © Taiwan Grace International Corp. All rights reserved. Do not reprint without permission.

Components

No.	Description	Qty
01	Cap	1
02	Filter Housing	1
03	O-ring	1
04	Port(Inlet)	1
05	Port(Outlet)	1
06	Vent	1

Dimensions

Model	A	B	C	ØD	E	ØK	M	Flow Rate	G. Weight
PH10 M	57	59	314	92	266	130	48	0 ~ 5 GPM / 0 ~ 1.1 m ³ /hr	1.38kg
PH20 M	57	59	571	92	523	130	48	0 ~ 10 GPM / 0 ~ 2.2 m ³ /hr	2.13kg

UNIT : mm

Customized housings are available on requests.

Actual flow rates will be determined on element selection and fluid viscosity.



Plastic Big Filter Housings

Grace Plastic Big Filter Housings are available in materials of clear and opaque sumps, providing versatile choices for residential, commercial and industrial applications. The extra large housings accept a wide variety of 115 mm diameter filter cartridges, allowing great flow capacity and providing economic alternatives of general water filtration. Housings are designed with single or double sealing o-rings to meet different requirements in various applications.

Applications

Household Water Filtration, Chemicals, Laboratory Facilities, Pre RO, Electronics, Food & Beverage, Cooling Water Filtration

Specifications

Housing Material	Reinforced Polypropylene (blue), Styrene Acrylonitrile (clear)
Cap Material	Acrylonitrile Butadiene Styrene (Single O-ring) Reinforced Polypropylene (Double O-rings)
O-ring	Buna-N

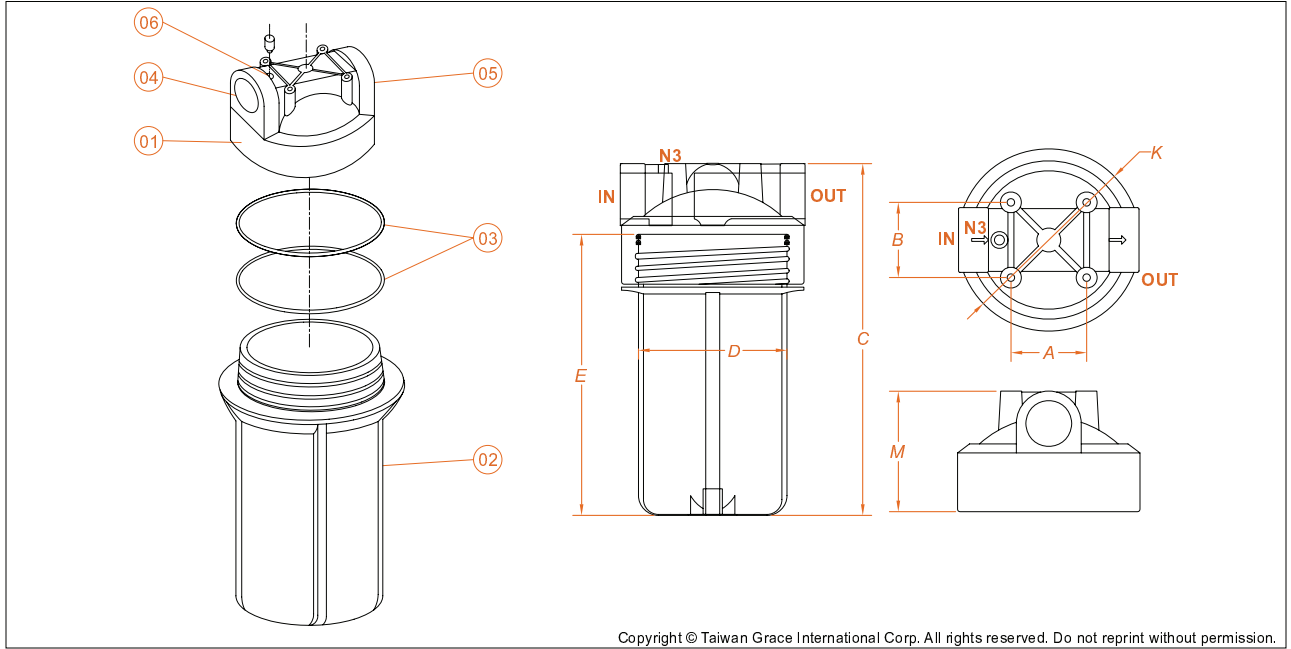
Operation Data

Maximum Operating Temperature : 60°C (140°F)
Maximum Operating Pressure : 7 bar(100 psi)

Ordering Information

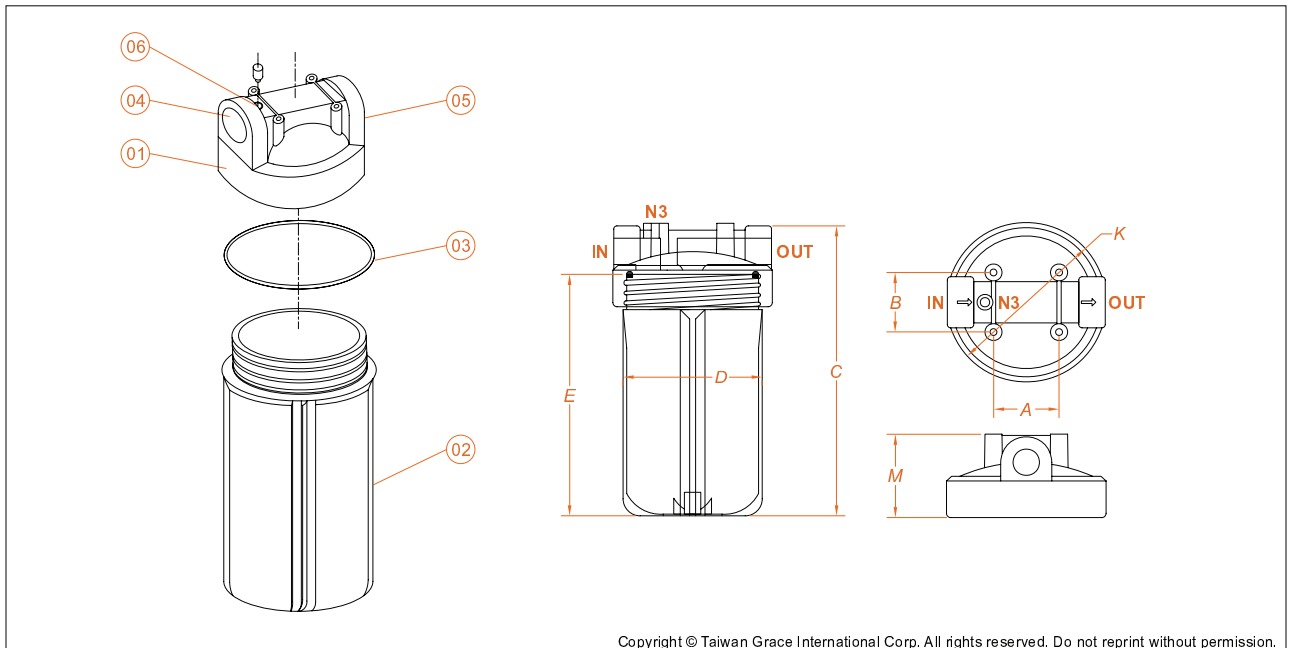
Type	Cartridge Length inch	Housing Color	Number of O-rings	Cap Color	Vent	Inlet/Outlet Porting (inch)	Inlet/Outlet Brass	O-ring Option	Series
PH Plastic Filter Housing	10 – 10" 20 – 20"	C -Clear B -Blue	1 -Single O-ring 2 -Double O-rings	K -Black	V -Vent N -No Vent	N10 - 1" NPTF B10 - 1" BSPF N15 - 1.5"NPTF B15 - 1.5"BSPF	(blank) No Brass A -Port Brass	B -Buna-N	B Big
PH Plastic Filter Housing	10 10"	C Clear	1 Single O-ring	K Black	V Vent	N10 1" NPT		B Buna-N	B Big

Plastic Big Filter Housings



Copyright © Taiwan Grace International Corp. All rights reserved. Do not reprint without permission.

Components			Dimensions									
No.	Description	Qty	Model	A	B	C	ØD	E	ØK	M	Flow Rate	G. Weight
01	Cap	1	PH10 B	75.5	75.5	353	148	286	181	121	0 ~ 20 GPM / 0 ~ 4.5 m ³ /hr	2.75kg
02	Filter Housing	1	PH20 B	75.5	75.5	604	148	540	181	121	0 ~ 40 GPM / 0 ~ 9 m ³ /hr	4.00kg
03	O-ring	2	UNIT : mm									
04	Port(Inlet)	1	Customized housings are available on requests.									
05	Port(Outlet)	1	Actual flow rates will be determined on element selection and fluid viscosity.									
06	Vent	1										



Copyright © Taiwan Grace International Corp. All rights reserved. Do not reprint without permission.

Components			Dimensions									
No.	Description	Qty	Model	A	B	C	ØD	E	ØK	M	Flow Rate	G. Weight
01	Cap	1	PH10 B	77	70	341	163	284	187	98	0 ~ 20 GPM / 0 ~ 4.5 m ³ /hr	2.70kg
02	Filter Housing	1	PH20 B	77	70	597	163	540	187	98	0 ~ 40 GPM / 0 ~ 9 m ³ /hr	3.70kg
03	O-ring	1	UNIT : mm									
04	Port(Inlet)	1	Customized housings are available on requests.									
05	Port(Outlet)	1	Actual flow rates will be determined on element selection and fluid viscosity.									
06	Vent	1										



UPVC Filter Cartridge Housings

Grace UPVC Cartridge Filter Housings feature excellent anti-corrosion ability by the wide chemical compatibility. Compared with products made of stainless steel in the same dimensions, the UPVC cartridge filter housings advantage of lightness, superior corrosion resistance, low cost and rust free. Innovative designs such as spin-off cap closure with easy element change out and mounting flange with secure installation make the UPVC filter housings ideal for various processes without complicated preparation.

- Ⓞ **Free of rust contamination in process fluid because of excellent anti-corrosion ability.**
- Ⓞ **Compared with products made by stainless steel, the UPVC filter housings advantage of lightness and low cost.**
- Ⓞ **Spin-off cap closure requires just a few turns to open and close, making element change out easy and quick.**
- Ⓞ **Bottom mounting flange provides secure and stable installation, enhanced safety and improved consistency during processes.**

Applications

Pre RO, Desalination, Waste Water Treatment, Household Water Filtration

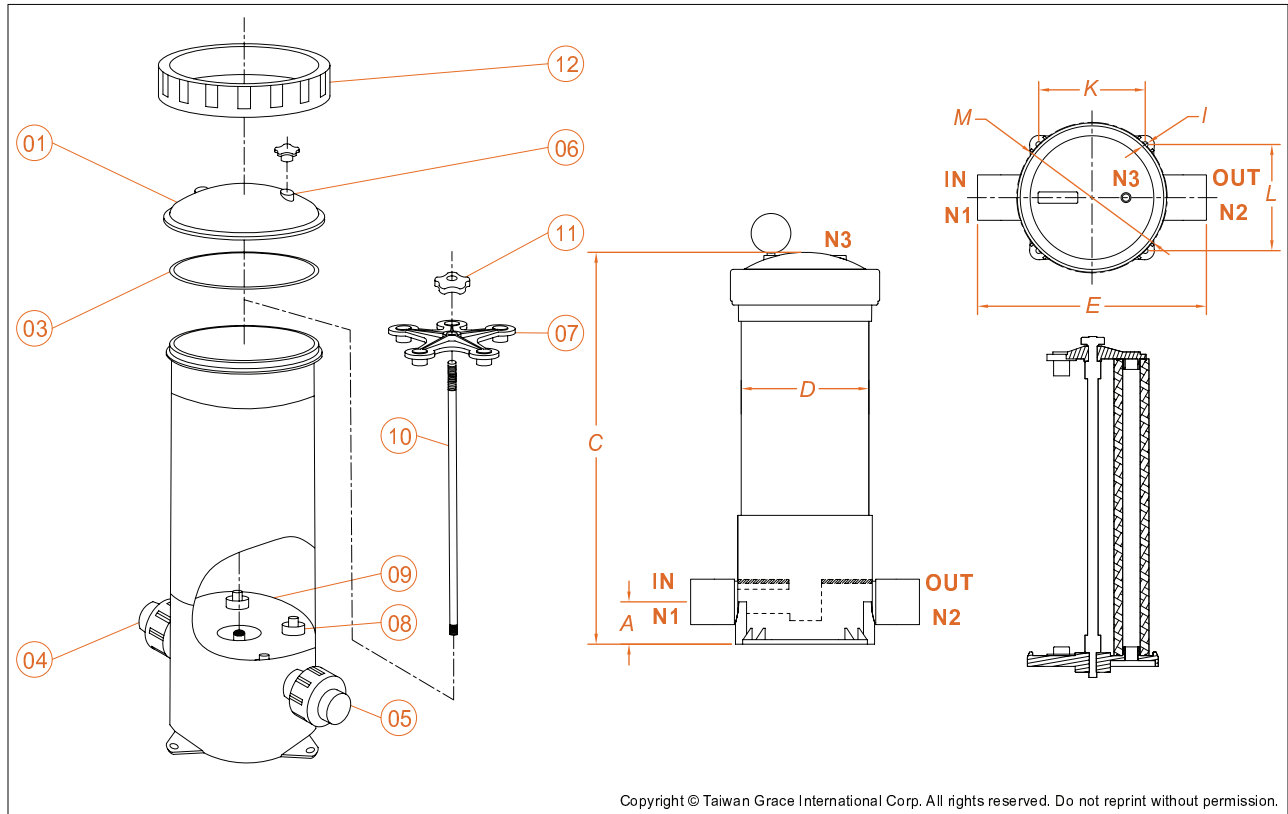
Operation Data

Maximum Operating Temperature : 60°C (140°F)
Maximum Operating Pressure : 4 bar(58 psi)

Ordering Information

Type	Length of Cartridge	Material of Construction	Number of Cartridges	Inlet/Outlet Size (inch/mm)		O-ring Option
				Pipe Standard	Gauge Size	
UFC Cartridge Filter Housing	10 - 10"	U - UPVC	3 - 3pcs	A - ANSI	15 - 1.5"(48mm)	E -EPDM V -Viton S -Silicone
	20 - 20"				20 - 2"(60mm)	
	30 - 30"		5 - 5pcs	D - DIN	40 - 50mm	
	40 - 40"				50 - 63mm	
UFC Cartridge Filter Housing	30 30"	U UPVC	5 5pcs	A ANSI	20 2"	E EPDM O-ring

UPVC Filter Cartridge Housings



Components

No.	Description	Qty
01	Top Cap	1
02	Shell	1
03	O-ring	1
04	Port(Inlet)	1
05	Port(Outlet)	1
06	Vent	1
07	Cartridge Squeeze Plate	1
08	Cartridge Bowl	3, 5
09	Cartridge Support Plate	1
10	Screw Stay	1
11	Nut	1
12	Retainer Ring	1

Dimensions

Model	A	C	ØD	E		ØJ	K	L	ØM	N1	N2	N3	Flow Rate	G. Weight
				DIN/ANSI 1.5"	DIN/ANSI 2"									
UFC10U3/5	75	465	225	365	473	10	188	186	262	DIN/ANSI 1.5"	1/4"	1/4"	0~ 25 GPM / 0 ~ 5 m ³ /hr	8.0kg
UFC20U3/5	75	715	225	365	473	10	188	186	262				0~ 55 GPM / 0 ~ 11 m ³ /hr	9.5kg
UFC30U3/5	75	965	225	365	473	10	188	186	262	DIN/ANSI 2"	1/4"	1/4"	0~ 85 GPM / 0 ~ 17 m ³ /hr	13.0kg
UFC40U3/5	75	1215	225	365	473	10	188	186	262				0~110 GPM / 0 ~ 22 m ³ /hr	15.3kg

UNIT : mm

Customized housings are available on requests.

Actual flow rates will be determined on element selection and fluid viscosity.



UPVC High Pressure Cartridge Filter Housings

Grace UPVC High Pressure Cartridge Filter Housings have excellent anti-corrosion ability because parts that have contact with process fluids are made of UPVC. Compared with products made of stainless steel in the same dimensions, the UPVC cartridge filter housings prevail of lightness, low cost and rust free. Secure quick swing bolt closure makes element change out convenient and exhibits better sealing performance. Mounting flange provides stable installation and turns UPVC filter housings as ideal options for various processes without complicated preparation.

- ⑥ **Free of rust contamination in process fluid because of excellent anti-corrosion ability.**
- ⑥ **Compared with products made by stainless steel, the UPVC filter housings prevail of lightness and low cost.**
- ⑥ **Quick swing bolt closure makes element change out convenient and exhibits better sealing performance.**
- ⑥ **Bottom mounting flange provides secure installation, enhanced safety and improved consistency during processes.**

Applications

Pre RO, Desalination, Waste Water Treatment, Household Water Filtration

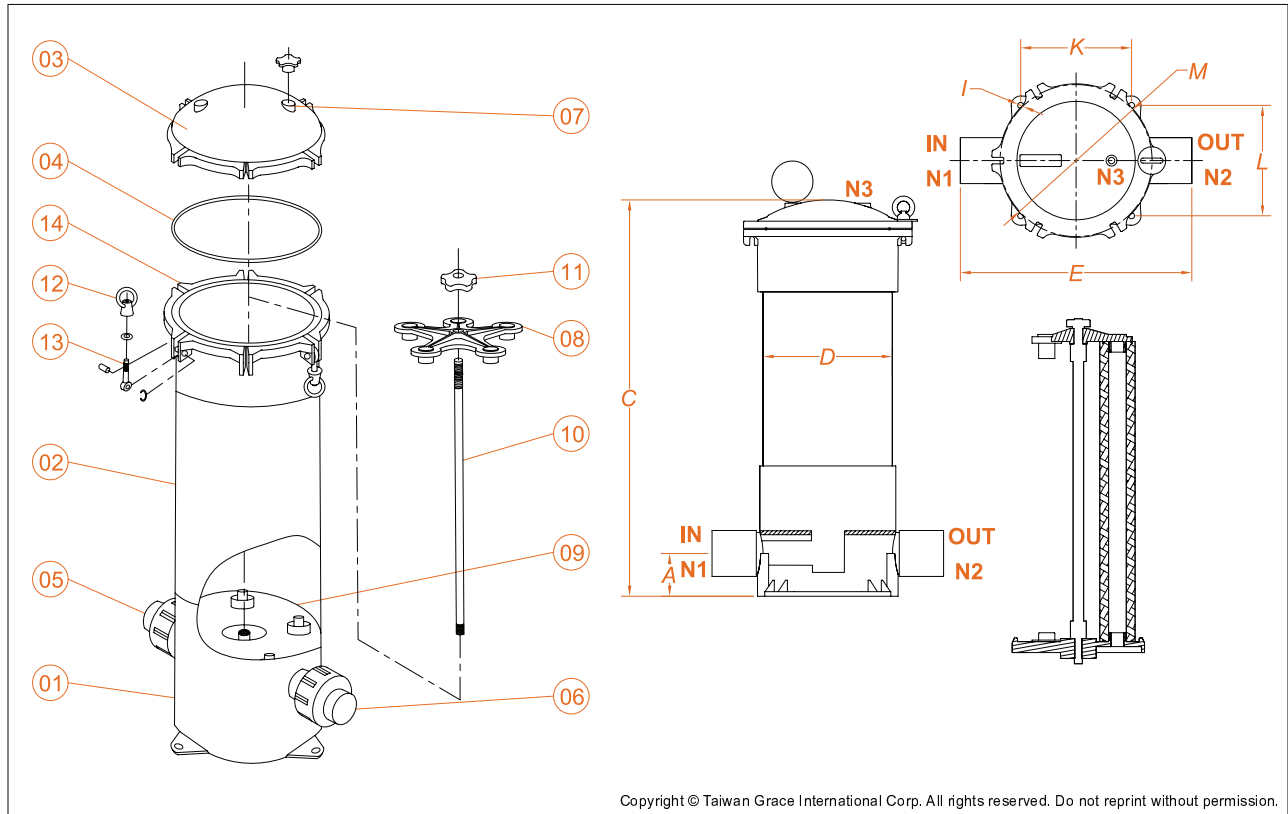
Operation Data

Maximum Operating Temperature : 60°C (140°F)
Maximum Operating Pressure : 4 bar(58 psi)

Ordering Information

Type	Length of Cartridge	Material of Construction	Number of Cartridges	Inlet/Outlet Size (inch/mm)		O-ring Option
				Pipe Standard	Gauge Size	
UFCG High Pressure Cartridge Filter Housing	10 - 10"	U - UPVC	3 - 3pcs 5 - 5pcs	A - ANSI	15 - 1.5"(48mm)	E -EPDM V -Viton S -Silicone
	20 - 20"				20 - 2"(60mm)	
	30 - 30"			D - DIN	40 - 50mm	
	40 - 40"				50 - 63mm	
UFCG High Pressure Cartridge Filter Housing	30 30"	U UPVC	5 5 pcs	A ANSI	20 2"	S Silicone O-ring

UPVC High Pressure Cartridge Filter Housings



Components

No.	Description	Qty
01	Pedestal	1
02	Body	1
03	Cap	1
04	O-ring	1
05	Port(Inlet)	1
06	Port(Outlet)	1
07	Vent	1
08	Cartridge Squeeze Plate	3, 5
09	Cartridge Support Plate	1
10	Screw Stay	1
11	Nut	1
12	Eye Nut	6
13	Eye Bolt	6
14	Eye Bolt Socket	6

Dimensions

Model	A	C	ØD	E		ØJ	K	L	ØM	N1	N2	N3	Flow Rate	G. Weight
				DIN/ANSI 1.5"	DIN/ANSI 2"									
UFCG10U3/5	75	465	225	365	473	10	188	186	290	DIN/ANSI 1.5"	1/4"	0~ 25 GPM / 0 ~ 5 m ³ /hr	8.0kg	
UFCG20U3/5	75	715	225	365	473	10	188	186	290		1/4"	0~ 55 GPM / 0 ~ 11 m ³ /hr	9.5kg	
UFCG30U3/5	75	965	225	365	473	10	188	186	290	DIN/ANSI 2"	1/4"	0~ 85 GPM / 0 ~ 17 m ³ /hr	13.0kg	
UFCG40U3/5	75	1215	225	365	473	10	188	186	290		1/4"	0~110 GPM / 0 ~ 22 m ³ /hr	15.3kg	

UNIT : mm

Customized housings are available on requests.

Actual flow rates will be determined on element selection and fluid viscosity.

UPVC High Pressure Multi-cartridges Filter Housings

Grace UPVC High Pressure Multi-cartridges Filter Housings feature excellent anti-corrosion by wide chemical compatibility. Compared with products made of stainless steel in the same dimensions, the UPVC cartridge filter housings advantage of lightness, superior corrosion resistance, low cost and rust free. Secure quick swing bolt closure makes element change out convenient and exhibits a better sealing performance, making the UPVC high pressure filter housings ideal for critical processes requiring high flow capacity.



- Ⓞ **Free of rust contamination in process fluid because of excellent anti-corrosion ability.**
- Ⓞ **Compared with products made of stainless steel, the UPVC filter housings advantage of lightness and low cost.**
- Ⓞ **Quick swing bolt closure makes element change out convenient and provides a better sealing performance.**
- Ⓞ **The high pressure type housings accept 9 rounds of filter cartridges, producing higher flow capacity for critical chemical processes.**

Applications

Pre RO, Desalination, Waste Water Treatment, Household Water Filtration

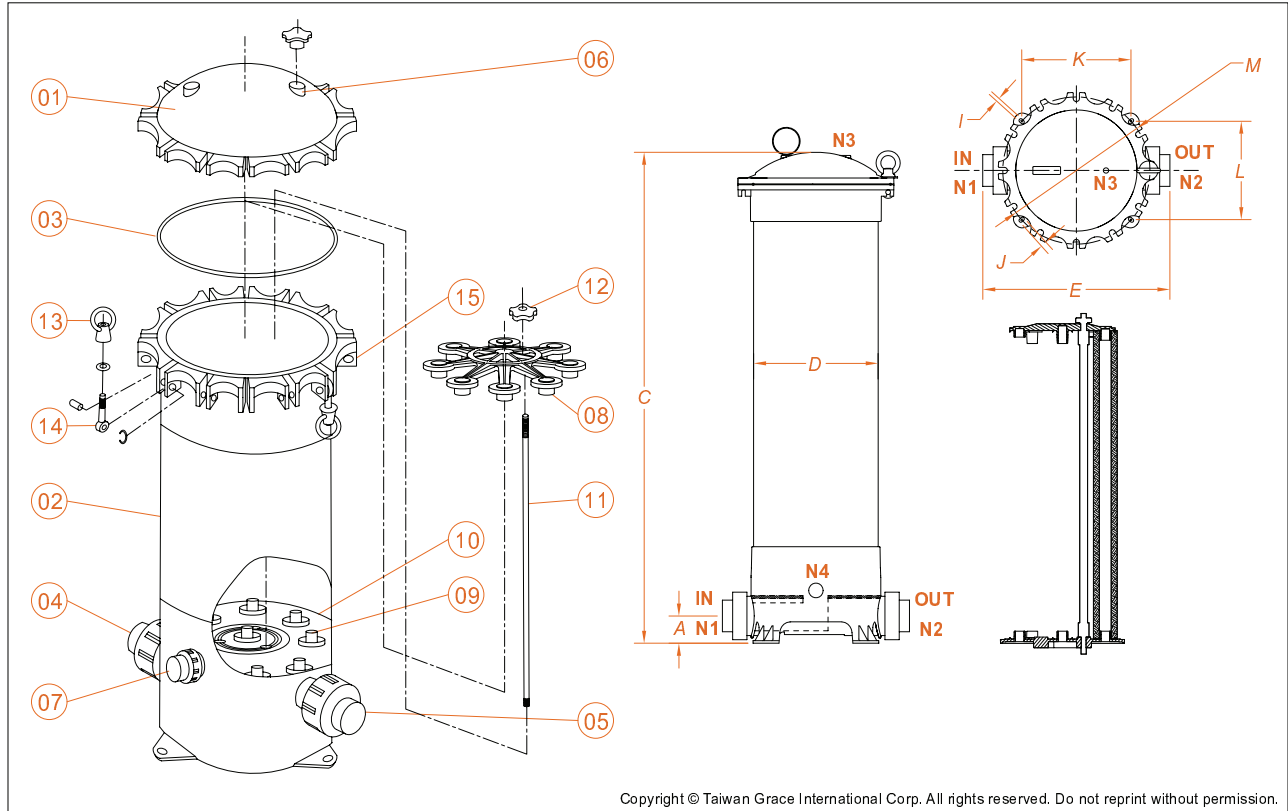
Operation Data

Maximum Operating Temperature : 60°C (140°F)
Maximum Operating Pressure : 4 bar(58 psi)

Ordering Information

Type	Length of Cartridge	Material of Construction	Number of Cartridges	Inlet/Outlet Size (inch/mm)		O-ring Option
				Pipe Standard	Gauge Size	
UFCG High Pressure Cartridge Filter Housing	10 - 10"	U - UPVC	8-8pcs	A - ANSI	30-3"(89mm)	E -EPDM V -Viton S -Silicone
	20 - 20"					
	30 - 30"		9-9pcs	D - DIN	80-90mm	
	40 - 40"					
UFCG High Pressure Cartridge Filter Housinge	30 30"	U UPVC	8 8 pcs	A ANSI	30 3"	S Silicone O-ring

UPVC High Pressure Multi-cartridges Filter Housings



Components

No.	Description	Q'ty
01	Top Cap	1
02	Shell	1
03	O-ring	1
04	Port(Inlet)	1
05	Port(Outlet)	1
06	Vent	1
07	Drain	1
08	Cartridge Squeeze Plate	1
09	Cartridge Bowl	9
10	Cartridge Support Plate	1
11	Screw Stay	3
12	Nut	3
13	Eye Nut	12
14	Eye Bolt	12
15	Eye Bolt Socket	12

Dimensions

Model	A	C	ØD	E	I	J	K	L	ØM	N1	N2	N3	N4	Flow Rate	G. Weight
UFCG10U8/9	69	495	315	510	9	15	276	249	395			1/4"		0~ 45 GPM / 0 ~ 10 m ³ /hr	8.0kg
UFCG20U8/9	69	745	315	510	9	15	276	249	395	DIN 3"		1/4"	DIN 1/2"	0~ 90 GPM / 0 ~ 20 m ³ /hr	9.5kg
UFCG30U8/9	69	995	315	510	9	15	276	249	395	ANSI 3"		1/4"	ANSI 1/2"	0~135 GPM / 0 ~ 30 m ³ /hr	13.0kg
UFCG40U8/9	69	1245	315	510	9	15	276	249	395			1/4"		0~180 GPM / 0 ~ 40 m ³ /hr	15.3kg

UNIT : mm

Customized housings are available on requests.

Actual flow rates will be determined on element selection and fluid viscosity.



UPVC Bag Filter Housings

Grace UPVC Bag Filter Housings feature excellent anti-corrosion by wide chemical compatibility. Compared with products made of stainless steel in the same dimensions, the UPVC filter housings advantage of lightness, superior corrosion resistance, low cost and rust free. Innovative design of spin-off cap closure makes element change out easy and convenient, exempting complicated preparation. All units are shipped with bag hold-down assembly to avoid bypass and thereof enhance filtration quality.

- Ⓞ **Free of rust contamination in process fluid because of excellent anti-corrosion ability.**
- Ⓞ **Compared with products made of stainless steel, the UPVC filter housings prevail of lightness and low cost.**
- Ⓞ **Spin-off cap closure requires just a few turns to open and close, making element change out easy and quick.**
- Ⓞ **All units are shipped with bag hold-down assembly to avoid bypass possibilities.**

Applications

Pre RO, Desalination, Waste Water Treatment, Household Water Filtration

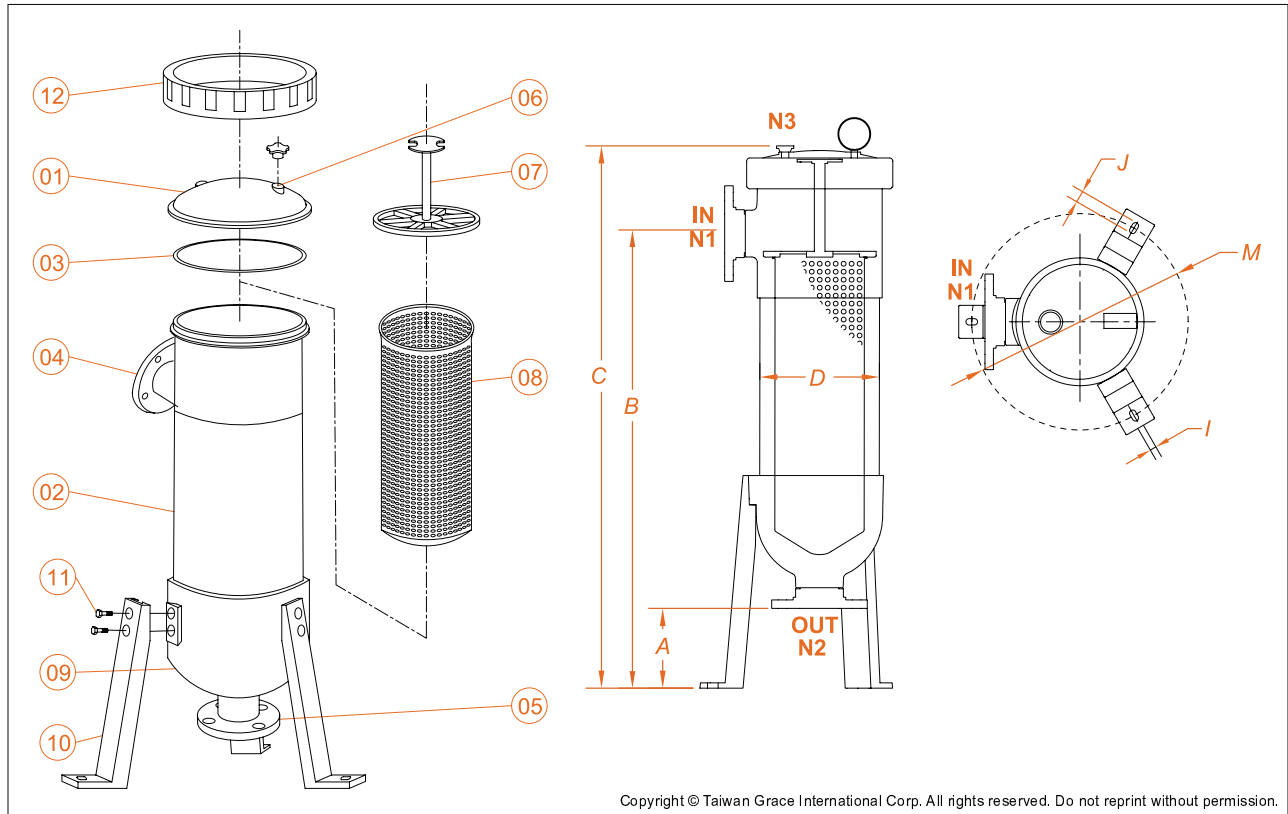
Operation Data

Maximum Operating Temperature : 60°C (140°F)
Maximum Operating Pressure : 4 bar(58 psi)

Ordering Information

Type	Bag Size	Material of Construction	Number of Bag	Inlet/Outlet Size (inch/mm)	O-ring Option
UFB Bag Filter Housing	01 - Size 1 02 - Size 2	U - UPVC	1 - 1 pce	A20 - ANSI 2" Flange(60mm) D50 - DIN 50 Flange(63mm)	E -EPDM V -Viton S -Silicone
UFB Bag Filter Housing	02 Size 2	U UPVC	1 1 pce	A20 ANSI 2" Flange	S Silicone O-ring

UPVC Bag Filter Housings



Copyright © Taiwan Grace International Corp. All rights reserved. Do not reprint without permission.

Components

No.	Description	Q'ty
01	Top Cap	1
02	Shell	1
03	O-ring	1
04	Port(Inlet)	1
05	Port(Outlet)	1
06	Vent	1
07	Bag Hold-down Assembly	1
08	Support Basket	1
09	Pedestal	1
10	Support Leg	3
11	Screw	6
12	Retainer Ring	1

Dimensions

Model	A	B	C	ØD	I	J	ØM	N1 N2	N3	Flow Rate	G. Weight
UFB01U1	150	630	785	225	12	22	407	DIN 2" / ANSI 2"	1/4"	0~ 90 GPM / 0 ~ 20 m ³ /hr	11.0kg
UFB02U1	150	1015	1180	225	12	22	407	DIN 2" / ANSI 2"	1/4"	0~200 GPM / 0 ~ 45 m ³ /hr	16.5kg

UNIT : mm

Customized housings are available on requests.

Actual flow rates will be determined on element selection and fluid viscosity.

UPVC High Pressure Bag Filter Housings



Grace UPVC Bag Filter Housings feature excellent anti-corrosion by wide chemical compatibility. Compared with products made of stainless steel in the same dimensions, the UPVC filter housings advantage of lightness, low cost and rust free. All units are shipped with bag hold-down assembly to avoid bypass possibilities. Secure quick swing bolt closure makes element change out convenient and exhibits a better sealing performance, enabling the UPVC high pressure bag filter housings to withstand higher operating pressure in critical processes.

- Ⓞ **Free of rust contamination in process fluid because of excellent anti-corrosion ability.**
- Ⓞ **Compared with products made by stainless steel, the UPVC filter housings advantage of lightness and low cost.**
- Ⓞ **Quick swing bolt closure makes element change out convenient and provides a better sealing performance.**
- Ⓞ **All units are shipped with bag hold-down assembly to avoid bypass possibilities.**

Applications

Pre RO, Desalination, Waste Water Treatment, Household Water Filtration

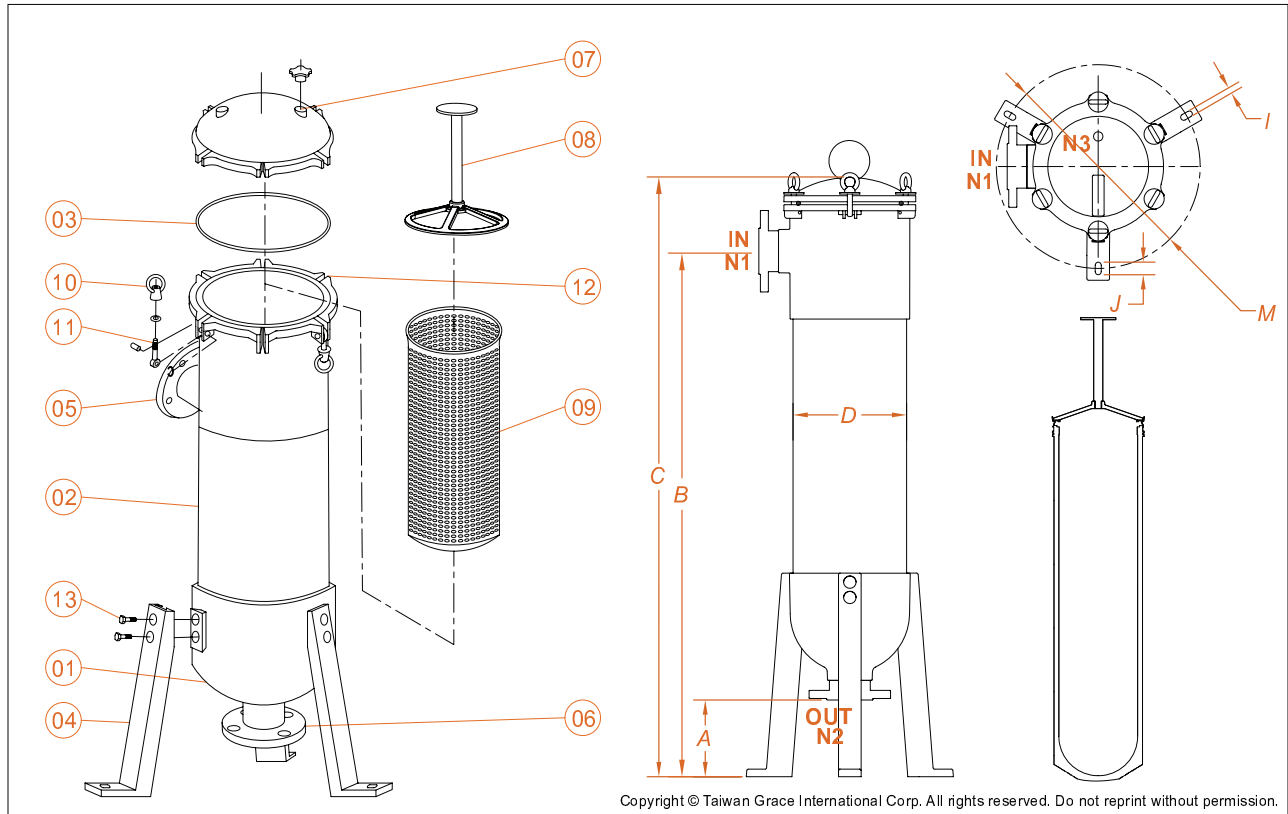
Operation Data

Maximum Operating Temperature : 60°C (140°F)
Maximum Operating Pressure : 4 bar(58 psi)

Ordering Information

Type	Bag Size	Material of Construction	Number of Bag	Inlet/Outlet Size (inch/mm)	O-ring Option
UFBG High Pressure Bag Filter Housing	01 - Size 1 02 - Size 2	U - UPVC	1 - 1 pce	A20 - ANSI 2" Flange(63mm) D50 - DIN 50 Flange(50mm)	E -EPDM V -Viton S -Silicone
UFBG High Pressure Bag Filter Housing	02 Size 2	U UPVC	1 1 pce	A20 ANSI 2" Flange	S Silicone O-ring

UPVC High Pressure Bag Filter Housings



Components

No.	Description	Q'ty
01	Pedestal	1
02	Body	1
03	O-ring	1
04	Leg Support	3
05	Inlet Port	1
06	Outlet Port	1
07	Vent	1
08	Support Basket	1
09	Basket	1
10	Eye Nut	6
11	Eye Bolt	6
12	Eye Bolt Socket	6
13	Screw	6

Dimensions

Model	A	B	C	ØD	I	J	ØM	N1 N2	N3	Flow Rate	G. Weight
UFBG01U	150	665	820	225	12	22	407	DIN 2" / ANSI 2"	1/4"	0~ 90 GPM / 0 ~ 20 m ³ /hr	11.0kg
UFBG02U	150	1045	1200	225	12	22	407	DIN 2" / ANSI 2"	1/4"	0~200 GPM / 0 ~ 45 m ³ /hr	16.5kg

UNIT : mm

Customized housings are available on requests.

Actual flow rates will be determined on element selection and fluid viscosity.



Ultraviolet Sterilizing Systems

Ultraviolet disinfection is one of the most popular technologies applied in water treatment because of its convenience and non side-effect advantage. UV efficiently kills algae, fungi, germs and virus in process water without generating harmful by-products. Grace UV systems are designed in compact sizes and accommodate effective UVC lamps, ensuring high quality of disinfection and purification. Sterilizers are available for processes from small volume to big scale, satisfying various applications and demanding requirements.

- Ⓞ **Sterilizers are equipped with effective UVC lamps which have superior disinfection performance.**
- Ⓞ **Enable to inactivate micro-organisms within seconds without generating harmful side-effects.**
- Ⓞ **Treatment chambers and cabinets are completely constructed by stainless steel, featuring great durability and sustainability.**
- Ⓞ **Electronic ballasts and compact control cabinets make more efficient and convenient system surveillance.**

Applications

Household Water Filtration, Aquarium, RO/DI, Food & Beverage, Well Water Treatment, Pharmaceutical, Laboratory Facilities, Electronics

Specifications

Treatment Chamber	SUS304, SUS316
O-ring	Silicone
Control Cabinet	SUS304
Support Mounting	SUS304
Electrical Supply	100V~240VAC 50/ 60Hz, Single Phase

Operation Data

Maximum Operating Temperature : 10°C ~ 40°C (50°F ~ 104°F)
 Maximum Operating Pressure : 8.62 bar (125 psi)

Ordering Information

MODEL	UVUS6	UVUS14	UVUS24	UVUS32	UVUS39	UVUS39	UVUS3902
Flow Rate	0.5GPM 2.0LPM	1.5GPM 6.0LPM	4.0GPM 15.0LPM	6.0GPM 22.0LPM	10.0GPM 38.0LPM	10.0GPM 38.0LPM	20.0GPM 75.0LPM
Operating Watts	6W	18W	24W	32W	39W	39W	78W
Number of Lamp	6W × 1	14W × 1	24W × 1	32W × 1	39W × 1	39W × 1	39W × 2
Inlet/Outlet Size	1/4"NPT	1/4"NPTF	1/2"NPTF	1/2"NPTF	3/4"NPTM	1"NPTM	1"NPTM
Control Cabinet	N/A	N/A	N/A	N/A	N/A	SUS304	SUS304
Dimensions L × W(mm)	Ø50.5 × 320	Ø64 × 340	Ø64 × 512	Ø64 × 680	Ø64 × 900	Ø89 × 900 × 186	Ø100 × 900 × 197
MODEL	UVUS3904	UVUS5506	UVUS5507	UVUS5508	UVUS5510	UVUS5512	UVUS5515
Flow Rate	48.0GPM 182.0LPM	67.2GPM 255.0LPM	67.2GPM 255.0LPM	76.8GPM 291.0LPM	96.0GPM 363.0LPM	115.0GPM 435.0LPM	144.0GPM 545.0LPM
Operating Watts	156W	330W	385W	440W	550W	660W	825W
Number of Lamp	39W × 4	55W × 6	55W × 7	55W × 8	55W × 10	55W × 12	55W × 15
Inlet/Outlet Size	1.5"NPTM	2" or 2.5" NPTM/Flange		2.5", 3" or 4" NPTM/Flange			4" or 5" NPTM/ Flange
Control Cabinet	SUS304						
Dimensions L × W(mm)	Ø177 × 900 × 280	Ø220 × 970 × 422	Ø220 × 970 × 422	Ø260 × 970 × 540	Ø260 × 970 × 540	Ø300 × 970 × 720	Ø390 × 970 × 810

FRP Softener Vessels



Grace FRP Pressure Vessels are ideal solutions for general commercial and industrial water treatment with essentially outstanding features of anti-corrosion and cost-effectiveness. Constructed by seamless Polyethylene and strengthened Fiber Reinforced Plastic (FRP) liners, all vessels are roved by FRP filament and sealed with high quality epoxy resin. Grace supplies a comprehensive series of NSF 44 certified FRP pressure vessels which are able to satisfy different needs and demanding requirements.



- Ⓞ **Vessels are constructed by food grade seamless Polyethylene and strengthened FRP liners, providing wide chemical compatibility.**
- Ⓞ **Quality assurance is proved by NSF 44 certificate.**
- Ⓞ **Vessels are widely compatible with commercial and industrial control valves.**
- Ⓞ **Manways, side flanges, sight glasses and optional water distribution systems are available for customized requests.**

Applications

Pre RO, Ion Exchange, Water Softener, Waste Water Filtration, Household Water Filtration, Food & Beverage, Water Storage

Specifications

Inner Shell	Polyethylene, Fiber Reinforced Plastic (FRP)
Outer Shell	Wound FRP Filament with Epoxy Resin Seal
Opening	2.5"- 8" NPSM threads (Polypropylene), 4"-8" UN threads (ABS), 4.5"- 8" Buttress (ABS), 6" Flange (FRP), other customized Manways and Side Flanges
Optional Color	Natural White, Blue, Gray, Black

Operation Data

Operating Temperature : 2°C ~ 49°C (35°F ~ 120°F)
 Maximum Operating Pressure : 10 bar(150 psi)
 Maximum Vacuum Pressure : 5" Hg(127mm Hg)

FRP Softener Vessels

Dimensions

Size (Inches)	Opening		Tank Diameter (mm)	Height With Base (mm)	Capacity		Base
	Top	Bottom			Gallon	Liter	
FRTK0724	NPSM 2.5"	N/A	181	645	4.0	15.0	Standard
FRTK0735	NPSM 2.5"	N/A	181	925	5.2	19.7	
FRTK0817	NPSM 2.5"	N/A	206	460	3.1	11.7	
FRTK0820	NPSM 2.5"	N/A	206	295	3.5	13.4	
FRTK0835	NPSM 2.5"	N/A	206	920	6.6	25.0	
FRTK0844	NPSM 2.5"	N/A	206	1140	8.7	32.9	
FRTK0935	NPSM 2.5"	N/A	232	910	8.3	31.4	
FRTK0940	NPSM 2.5"	N/A	232	1025	9.5	36.0	
FRTK0948	NPSM 2.5"	N/A	232	1225	12.7	48.0	
FRTK1017	NPSM 2.5"	N/A	257	460	4.8	18.2	
FRTK1035	NPSM 2.5"	N/A	257	905	10.2	38.6	
FRTK1044	NPSM 2.5"	N/A	257	1130	13.1	49.6	
FRTK1054	NPSM 2.5"	N/A	257	1390	16.4	62.0	
FRTK1248	NPSM 2.5"	N/A	308	1225	20.6	78.0	
FRTK1252	NPSM 2.5"	N/A	308	1340	22.2	84.0	
FRTK1252	Buttress 4.5"	N/A	308	1340	22.2	84.0	
FRTK1265	NPSM 2.5"	N/A	308	1675	29.6	112.0	
FRTK1354	NPSM 2.5"	N/A	334	1390	27.5	104.0	
FRTK1465	NPSM 2.5"	N/A	360	1640	40.7	154.0	
FRTK1465	UN 4"	N/A	360	1640	40.7	154.0	
FRTK1665	NPSM 2.5"	N/A	410	1640	48.9	185.0	
FRTK1665	UN 4"	N/A	410	1640	48.9	185.0	
FRTK1672	NPSM 2.5"	N/A	405	2042	53.6	203.0	
FRTK1672	UN 4"	N/A	405	2042	53.6	203.0	

FRP Softener Vessels

Dimensions

Size (Inches)	Opening		Tank Diameter (mm)	Height With Base (mm)	Capacity		Base
	Top	Bottom			Gallon	Liter	
FRTK1865	UN 4"	N/A	470	1902	66.8	253.0	Tripod
FRTK2072	UN 4"	N/A	520	2042	89.0	337.0	
FRTK2072	UN 4"	Flange 6"	520	2042	89.0	337.0	
FRTK2162	UN 4"	N/A	550	1842	88.0	333.0	
FRTK2162	UN 4"	Flange 6"	550	1842	88.0	333.0	
FRTK2472	UN 4"	N/A	620	2042	126.8	480.0	
FRTK2472	UN 4"	Flange 6"	620	2042	126.8	480.0	
FRTK3072	UN 4"	N/A	775	2045	195.5	740.0	
FRTK3072	UN 4"	Flange 6"	775	2045	195.5	740.0	
FRTK3672	UN 4"	N/A	925	2145	283.0	1071.0	
FRTK3672	UN 4"	Flange 6"	925	2145	283.0	1071.0	
FRTK4072	Flange 6"	N/A	1025	2148	338.7	1282.0	
FRTK4072	Flange 6"	Flange 6"	1025	2148	338.7	1282.0	
FRTK4872	Flange 6"	N/A	1225	2105	477.7	1808.0	
FRTK4872	Flange 6"	Flange 6"	1225	2105	477.7	1808.0	
FRTK4896	Flange 6"	N/A	1225	2695	657.0	2487.0	
FRTK4896	Flange 6"	Flange 6"	1225	2695	657.0	2487.0	
FRTK5696	Flange 6"	N/A	1430	2730	844.1	3195.0	
FRTK5696	Flange 6"	Flange 6"	1430	2730	844.1	3195.0	
FRTK6096	Flange 6"	N/A	1530	2652	958.0	3626.0	
FRTK6096	Flange 6"	Flange 6"	1530	2652	958.0	3626.0	

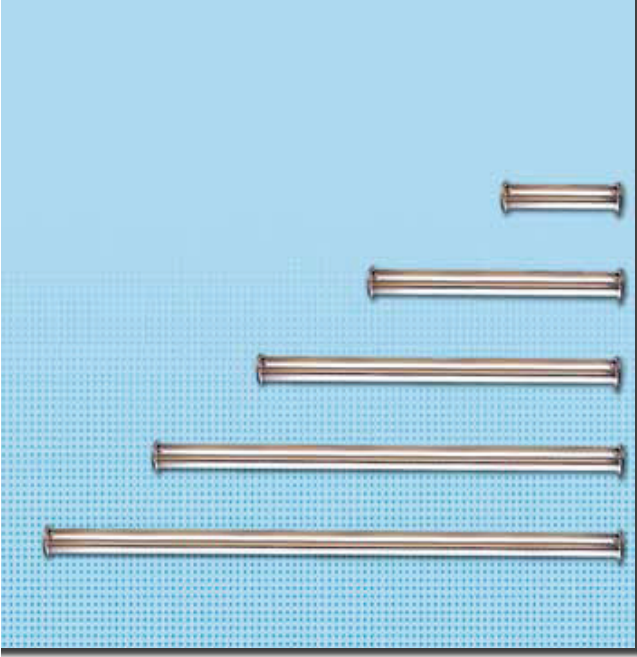
Other sizes can be customized on requests.

Ordering Information

Type	Tank Size W X H (inch)	Color	Material of Liner	Opening				Option
				Position	Size	Position	Size	
FRTK FRP Softener Vessel	0724	W - Natural White	E Polyethylene R - FRP	T -Top B -Bottom	25 -2.5" NPSM	T -Top B -Bottom	25 -2.5" NPSM	N -No Base
	0735	B - Blue			40 -4" UM		40 -4" UM	
	6096	G - Gray K - Black			60 -6" Flange		60 -6" Flange	
FRTK FRP Softener Vessel	0948 9" x 48"	B Blue	R FRP	T Top	25 2.5" NPSM			

Stainless Steel RO Membrane Housings

Grace provides a comprehensive range of Stainless Steel RO Membrane Housings for RO membranes in 2.5", 4" and 8". Housings are designed in either end-entry or side-entry types, collocating with various sizes of permeate and concentrate ports. Diversified options provide customers much convenience to meet different applications and save expensive investment on complicated manifolds. All stainless steel RO membrane housings are hydraulic tested to ensure consistent quality at point of use.



- ⑥ A comprehensive range of RO membrane housings are available for membrane in diameter 2.5", 4" and 8".
- ⑥ Housings are designed in end-entry or side-entry types, collocating with various sizes of permeate and concentrate ports.
- ⑥ Optional multi-ports designs make easier system connections and save expensive investment on manifolds.
- ⑥ All membrane housings are designed, manufactured and tested under strict guidelines, ensuring consistent quality at point of use.
- ⑥ Units are shipped with Polyurethane Saddles and SUS304 Straps.

Applications

RO Systems, UF Systems, Food & Beverage, Pharmaceutical, Electronics

Ordering Information

Type	Membrane Diameter (inch)	Element	Material of Housing	End Cap	End Cap Coupling	Entry Type	Port Size				Option
							Concentrate		Permeate		
RH -SUS RO Membrane Housing	25 - Ø2.5" 40 - Ø4" 80 - Ø8"	14 - L : 14"	4 -SUS304 6 -SUS316 7 -SUS316L	A -ABS S -SUS	C -Clamp B -Bolt & Screw T -T-Bar Clamp	E -End Entry S -Side Entry	N -NPT V -Victaulic C -Sanitary Clamp	02 -1/4" 04 -1/2" 06 -3/4" 10 -1" 15 -1.5"	N -NPT V -Victaulic C -Sanitary Clamp	02 -1/4" 04 -1/2" 06 -3/4" 10 -1" 15 -1.5"	(blank) -Electrolysis P -All Polish OP -External Polish
		21 - L : 21"									
		40 - L : 40"									
		80 - 40" x 2 pcs.									
		120 - 40" x 3 pcs.									
160 - 40" x 4 pcs.											
200 - 40" x 5 pcs.											
240 - 40" x 6 pcs.											
		Other customized Sizes									
RH	40	40	4	A	C	E	N	06	N	04	
SS RO Membrane Housing, 4040 in SS304, ABS End Cap, Clamp, End Entry, Concentrate 3/4" NPT, Permeate 1/2" NPT											

Stainless Steel RO Membrane Housings

Operation Data & Specifications

ACE / ACS Series					
Housing Material : SUS304, SUS316, SUS316L End Cap Material : ABS Coupling : SUS304 Clamp Maximum Operating Pressure : 17 bar (250 psi) Maximum Operating Temperature : 60°C (140°F)					
ACS			ACE		
					
Membrane Diameter	Model	Number of Membranes	Entry Type	Port Size	
				Concentrate	Permeate
2.5"	RH2514	14"/1 element	End Entry	3/8" NPTF	1/4" NPTF
	RH2521	21"/1 element	End / Side Entry	3/8" NPTF	1/4" NPTF
	RH2540	40"/1 element		3/8" NPTF	3/8" NPTF
4"	RH4014	14"/1 element	End Entry	1/2" NPTF	1/2" NPTF
	RH4021	21"/1 element	End / Side Entry	3/4" NPTF or 1/2" NPTF	1/2" NPTF
	RH4040	40"/1 element			
	RH4080	40"/2 elements			
	RH40120	40"/3 elements			
	RH40160	40"/4 elements			

Operation Data & Specifications


SCE / SCS Series					
Housing Material : SUS304, SUS316, SUS316L End Cap Material : SUS304, SUS316, SUS316L (consistent with housing materials) Coupling : SUS304 Clamp Maximum Operating Pressure : 20 bar (300 psi) Maximum Operating Temperature : 60°C (140°F)					
SCE			SCS		
					
Membrane Diameter	Model	Number of Membranes	Entry Type	Port Size	
				Concentrate	Permeate
8"	RH8040	40"/1 element	End/Side Entry	1 1/2" Victaulic	1" NPTF
	RH8080	40"/2 elements			
	RH80120	40"/3 elements			
	RH80160	40"/4 elements			
	RH80200	40"/5 elements			
	RH80240	40"/6 elements			

Stainless Steel RO Membrane Housings

Operation Data & Specifications

SBE / SBS Series					
Housing Material : SUS304, SUS316, SUS316L End Cap Material : SUS304, SUS316, SUS316L (consistent with housing materials) Coupling : SUS304 Bolt & Screw Maximum Operating Pressure : 41 bar (600 psi) Maximum Operating Temperature : 60°C (140°F)					
SBE			SBS		
					
Membrane Diameter	Model	Number of Membranes	Entry Type	Port Size	
				Concentrate	Permeate
2.5"	RH2521	14"/1 element	End Entry	3/8" NPTF	1/4" NPTF
	RH2540	21"/1 element		3/8" NPTF	3/8" NPTF
4"	RH4021	21"/1 element	End Entry	3/4" NPTF or 1/2" NPTF	1/2" NPTF
	RH4040	40"/1 element			
	RH4080	40"/2 element			
	RH40120	40"/3 elements			
	RH40160	40"/4 elements			
8"	RH8040	40"/1 element	Side Entry	1.5" Victaulic or Sanitary Clamp	1" Victaulic or Sanitary Clamp
	RH8080	40"/2 elements			
	RH80120	40"/3 elements			
	RH80160	40"/4 elements			
	RH80200	40"/5 elements			
	RH80240	40"/6 elements			

Operation Data & Specifications

STS Series					
Housing Material : SUS304, SUS316, SUS316L End Cap Material : SUS304, SUS316, SUS316L (consistent with housing materials) Coupling : SUS304 Clamp Maximum Operating Pressure : 20 bar (300 psi) Maximum Operating Temperature : 60°C (140°F)					
STS					
					
Membrane Diameter	Model	Number of Membranes	Entry Type	Port Size	
				Concentrate	Permeate
4"	RH4040	40"/1 element	Side Entry	1/2" Sanitary Clamp or 3/4" Sanitary Clamp	1/2" Sanitary Clamp
	RH4080	40"/2 elements			
	RH40120	40"/3 elements			
	RH40160	40"/4 elements			



Sales Partners Worldwide



Headquarter Office



China Office



Taiwan Factory



Taiwan Grace International Corp.

5F, No. 16-2, Sec. 2, Jhongyang S. Rd., Beitou District 11270, Taipei, Taiwan

TEL : +886-2-2898-1518

FAX : +886-2-2898-1517

E-mail : info@taiwangrace.com.tw

<http://www.gracefilter.com>

Copyright © Taiwan Grace International Corp. All rights reserved. Do not reprint without permission.