



**THE FOOD
WASTE EXPERTS**



A1200 ROCKET COMPOSTER

OUR THIRD LARGEST FOOD WASTE COMPOSTER, THE A1200 IS A POPULAR SYSTEM FOR USE AT GAS / OIL CAMPS, MINES AND LARGE UNIVERSITIES. THE A1200 CONTACT PARTS ARE CONSTRUCTED IN STAINLESS STEEL AND HAVING ONLY ONE PRIMARY MOVING PART, RUNNING COSTS ARE KEPT LOW

The A1200 Rocket composter comprises of a static drum body with an intermittently turning central agitator & all parts that are in contact with organics are manufactured in 304SS. With minimal moving parts consequently energy use is low, but reliability and longevity of service are high.

This unit is extremely robust and simple to maintain, but also comes equipped with a highly flexible HMI system, that gives the operator a much greater level of process control, allowing them to continually fine tune the process for different mixes.

The Rocket range of in vessel composters are suitable for the on-site processing of:

- Cooked / Uncooked Meat & Fish
- Cooked / Uncooked Fruit & Vegetables
- Garden Waste / Green Wastes
- Animal Waste (including some types of bedding)



" We needed a permanent solution to the food wastes generated at the camp, with hundreds of people eating three meals daily and the nearest disposal site over 250 kilometres away having a solution on site was a must, the added bonus that the end product can be used on the land around the camp saves any disposal requirements"

John W Jones

Environment Manager, Exxon

A1200 Rocket Pictured for illustration purposes only



**THE FOOD
WASTE EXPERTS**



A1200 ROCKET COMPOSTER

TECHNICAL DETAIL (BASE MODEL)

Size (Vessel only):	Length	7.0m
	Width	1.4m
	Height	1.8m (no hopper)
Construction:	304ss all parts in contact with organics	
Weight:	2750kg (empty)	
Target Performance:	Up to 650 litres per day (Determined by feed materials, loading frequency and operating conditions. Contact Tidy Planet for detailed advice)	
Drive Motor:	2.2 kw	
Heater Element:	4 x 1.0kw (thermostatically controlled)	
Air handling:	1 x 0.25kw	
Power Requirement:	3ph/400v/50hz	
Power Consumption:	30-60kwh+ per week average	
Temperature Recording:	6 insertion type to main vessel + ambient & exhaust (Data-logging included)	
Air extraction:	Included as standard	
Housing Requirements:	Min 10m x 4.0m x 4.0m (LxWxH) covered hard standing with non porous surface	
Optional Extras:	2m inclined compost stockpile conveyor 120 litre wheeled bin lifting system + hopper Low level hopper & feed conveyor Air injection system and side channel fan Modular bio-filter Power screen for refining end product Communication package	





**THE FOOD
WASTE EXPERTS**



A1200 ROCKET COMPOSTER

ANCILLARY OPTIONS



BIN LOADING SYSTEM

TIP CYCLE (SPEED)	50SEC~
MAX TIP WEIGHT	150KG
BIN SIZE	120L



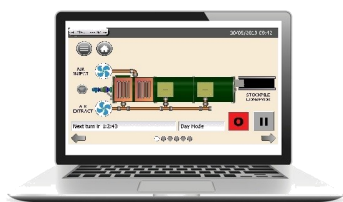
BIN LOADER & LIDDED HOPPER

TIP CYCLE (SPEED)	50SEC~
TIP WEIGHT	150KG
BIN SIZE	120L



AIR INJECTION SYSTEM

BLOWER	2.2KW
PRESSURE	400MBAR
INPUT POINTS	QTY 4



GLOBAL REMOTE MONITORING PACKAGE

CONNECTION	WIFI / ETHERNET / 4G
CLOUD DATA LOGGING	3YR
CLOUD NOTIFY PACKAGE	3YR



COMPOST STOCKPILE CONVEYOR

LENGTH	2.0M
TIP HEIGHT	1.0M~
SPEED	0.7M/S



THE FOOD
WASTE EXPERTS



A1200 ROCKET COMPOSTER

LAYOUT FOR ILLUSTRATION PURPOSES ONLY

