



**THE FOOD
WASTE EXPERTS**



A500 ROCKET COMPOSTER

THE SMALLEST IN OUR RANGE OF IN VESSEL COMPOSTING SYSTEMS THE A500 IS IDEAL FOR USE AT SCHOOLS, OUTDOOR ACTIVITY CENTRES AND SMALL COMMUNITY PROJECTS. EASY TO MAINTAIN AND PORTABLE, THIS UNIT CAN BE INSTALLED IN MOST LOCATIONS

The A500 Rocket composter the smallest in our range of composting systems, is capable of continuously processing up to 40 litres of food waste each day. Thermostatic controls automate the process, ensuring minimum operator time with only a standard single-phase 240-volt power supply needed.

Available as a stand alone portable organic waste solution, the A500 is equipped with 4 channel temperature recording ability and the robust construction ensures a long lifespan. The Rocket range of food waste treatment systems are suitable for the on-site processing of:

- Cooked / Uncooked Meat & Fish
- Cooked / Uncooked Fruit & Vegetables
- Garden Waste / Green Waste
- Animal Waste (including some types of bedding)

“To date this machine has proved the best recycling investment that this authority has purchased”

*Jack Lindsey,
Warwickshire County Council*



A500 Rocket Pictured for illustration purposes only



THE FOOD
WASTE EXPERTS



A500 ROCKET COMPOSTER

TECHNICAL DETAIL

Size:	Length	2.5m
	Width	0.7m
	Height	1.3m
Weight		150kg (empty)
Capacity:		Up to 40 litres of food waste per day (Determined by feed materials, loading frequency and operating conditions. Contact Tidy Planet for detailed advice)
Motor:		0.18kw
Heater Element:		0.8kw (thermostatically controlled)
Power Requirement:		1ph 240v 16amp
Power Consumption:		12kwh+ per week (average)
Temperature Recording:		4 K-Type Thermocouple (Data-logger included)
Housing Requirements:		Min 3.5m x 2.0m (LxW) covered hard standing ideally with non porous surface
Optional Extras:		Power screen for refining end product Vented woodchip storage bins Food waste caddies



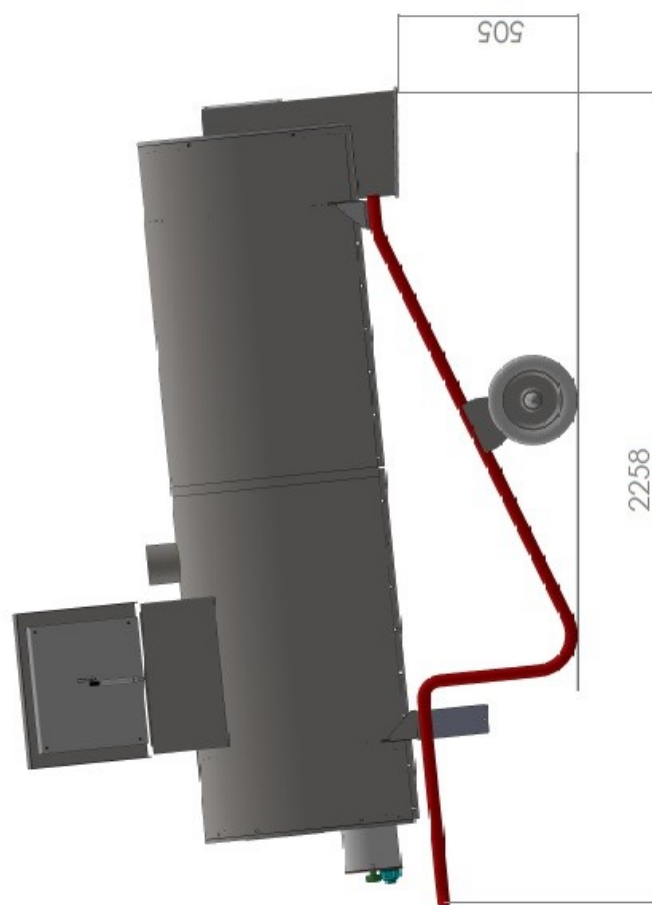
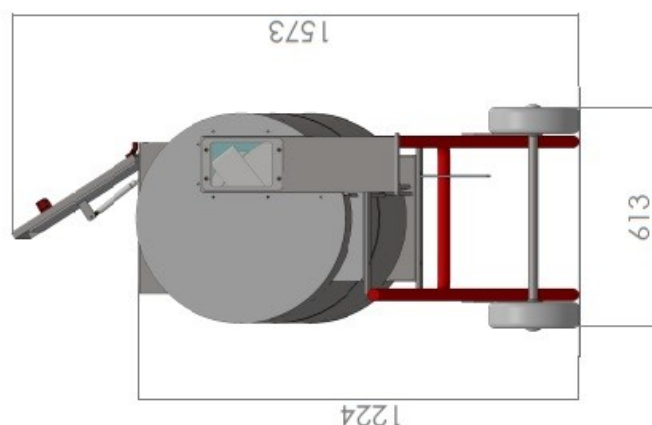


THE FOOD
WASTE EXPERTS



A500 ROCKET COMPOSTER

DIMENSIONS FOR ILLUSTRATION ON;





**THE FOOD
WASTE EXPERTS**



A700 ROCKET COMPOSTER

THE A700 IS OFTEN USED AT SCHOOLS, COLLEGES & HOTELS. IT ONLY REQUIRES A 16AMP 1PH POWER SUPPLY & A 10M² LEVEL COVERED AREA. THE A700 ROCKET IS LOADED BY HAND, HAS ONLY ONE MOVING PART AND ALL ORGANIC CONTACT PARTS ARE MADE FROM STAINLESS STEEL

The A700 Rocket composter, one of our most popular stand alone systems has been used at schools, colleges, universities and even nuclear power stations for dealing with problematic food waste disposal. It is capable of continuously processing up to 100 litres of food waste each day and a simple, easily understood control system automates the process, ensuring minimum operator time.

Available as a stand alone or containerised organic waste solution, the A700 is equipped with a 4 channel temperature datalogger and air extraction system as standard. The robust construction ensuring longevity, the Rocket range of food waste treatment systems are suitable for the on-site processing of:

- Cooked / Uncooked Meat & Fish
- Cooked / Uncooked Fruit & Vegetables
- Garden Waste / Green Waste
- Animal Waste (including some types of bedding)

"The first Rocket worked so well that we have expanded our operation and added an A700—the perfect solution for our multi site food production"

***Graeme Holland,
Facilities Manager
University of Salford***



A700 Rocket Pictured for illustration purposes only



THE FOOD
WASTE EXPERTS



A700 ROCKET COMPOSTER

TECHNICAL DETAIL

Size:	Length	3.0m
	Width	0.9m
	Height	1.6m
Weight		300kg(empty)
Capacity:		Up to 100 litres of food waste per day (Determined by feed materials, loading frequency and operating conditions. Contact Tidy Planet for detailed advice)
Motor:		0.75kw
Heater Element:		2 x 0.8kw (thermostatically controlled)
Power Requirement:		1ph 240v 16amp x 2 sockets
Power Consumption:		26kwh+ per week (average)
Temperature Recording:		4 K-Type Thermocouple (Data-logger included)
Air extraction:		Pedestal fan with external motor mounted to composter frame, adjustable air volume baffle and 110mm pipe from vessel to fan included
Housing Requirements:		Min 5.0m x 2.0m x 2.7m (LxWxH) covered hard standing ideally with non porous surface
Optional Extras:		Power screen for refining end product Vented woodchip storage bins Loading steps



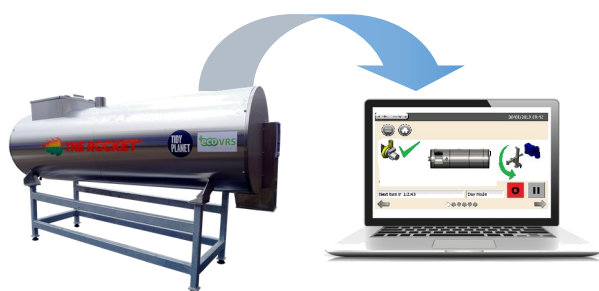


**THE FOOD
WASTE EXPERTS**



A700 ROCKET COMPOSTER

ANCILLARY OPTIONS



**A700 PROGRAMMABLE PLC
A700 COMMS PACK**



SS304 GANTRY A700



23 LITRE COLLECTION CADDIES



**WOODCHIP BIN
BIOFILTER SYSTEM (NO MEDIUM)**



POWER SIEVE

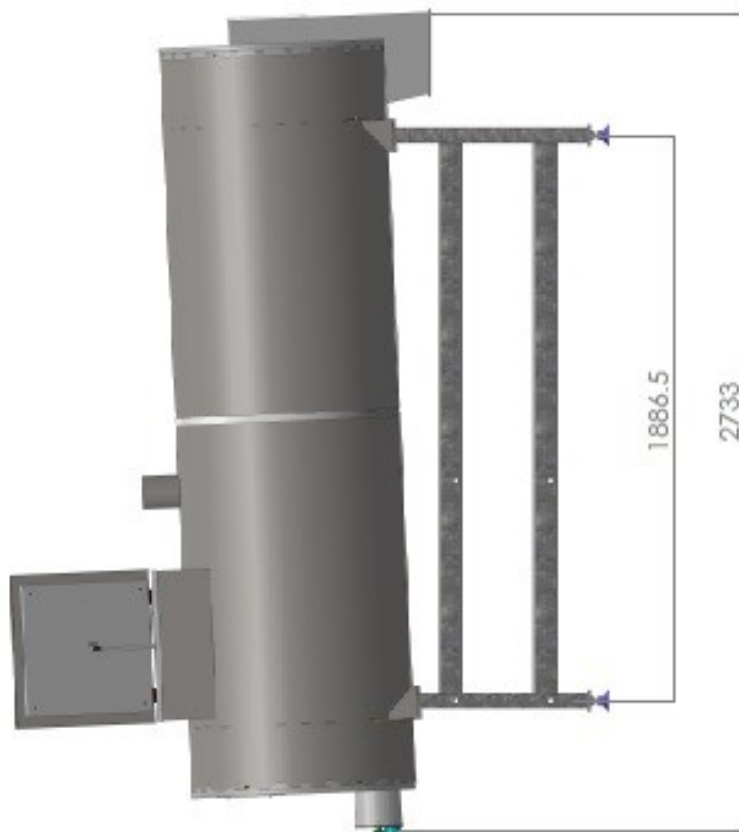
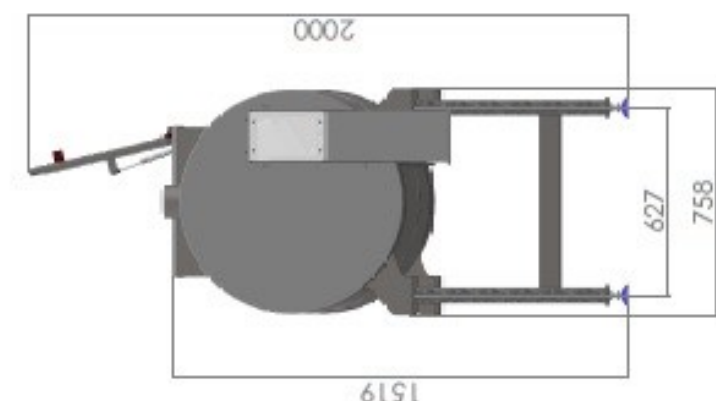


THE FOOD
WASTE EXPERTS



A700 ROCKET COMPOSTER

DIMENSIONS FOR ILLUSTRATION ONLY





**THE FOOD
WASTE EXPERTS**



A900 ROCKET COMPOSTER

OUR MOST POPULAR FOOD WASTE COMPOSTER IS USED AT LARGE HOTELS, UNIVERSITIES & REMOTE ISLAND APPLICATIONS. THE A900 REQUIRES A 16AMP 1PH POWER SUPPLY, HAS ONLY ONE MOVING PART AND ALL PARTS IN CONTACT WITH ORGANICS ARE CONSTRUCTED FROM STAINLESS STEEL

The A900 Rocket composter, is capable of continuously processing up to 215 litres of food waste each day. Simple and robust, this unit has a small footprint and a high throughput and is very easily installed and maintained.

Constructed throughout in 304SS and being equipped with an uprated air handling system as standard for 2020, the A900 provides the owner with a reliable, low cost, lifetime solution to their organic wastes.

The unit can be supplied as a stand alone unit or as fully containerised system in the "Comp-tainer®" format where up to two units of composter can be housed side by side.

The Rocket range of food waste composters are suitable for the on-site processing of:

- Cooked / Uncooked Meat & Fish
- Cooked / Uncooked Fruit & Vegetables
- Garden Waste / Green Waste
- Animal Waste (including some types of bedding)



A900 Rocket Pictured for illustration purposes only



**THE FOOD
WASTE EXPERTS**



A900 ROCKET COMPOSTER

TECHNICAL SPECIFICATIONS

Size:	Length	4.0m
	Width	1.0m
	Height	1.8m
Weight		627kg (empty)
Capacity:	Up to 215litres per day *Determined by feed materials, loading frequency and operating conditions. Contact Tidy Planet for detailed advice	
Drive Motor:	0.75kw	
Heater Element:	2 x 0.8kw (thermostatically controlled)	
Power Requirement:	1ph 240v 16amp x 2 sockets	
Power Consumption:	30kwh+ per week	
Temperature Recording:	4 K-Type Thermocouple (Data-logger included)	
Air extraction:	Pedestal fan with external motor mounted to composter frame, adjustable air volume baffle and 110mm pipe from vessel to fan included	
Housing Requirements:	Min 6.0m x 3.0m x 2.8 (LxWxH) level, covered hard standing ideally with non porous surface	





**THE FOOD
WASTE EXPERTS**



A900 ROCKET COMPOSTER

ANCILLARY OPTIONS



**A900 PROGRAMMABLE PLC
A900 COMMS PACK**



SS304 GANTRY A900



23 LITRE COLLECTION CADDIES



**WOODCHIP BIN
BIOFILTER SYSTEM (NO MEDIUM)**



POWER SIEVE

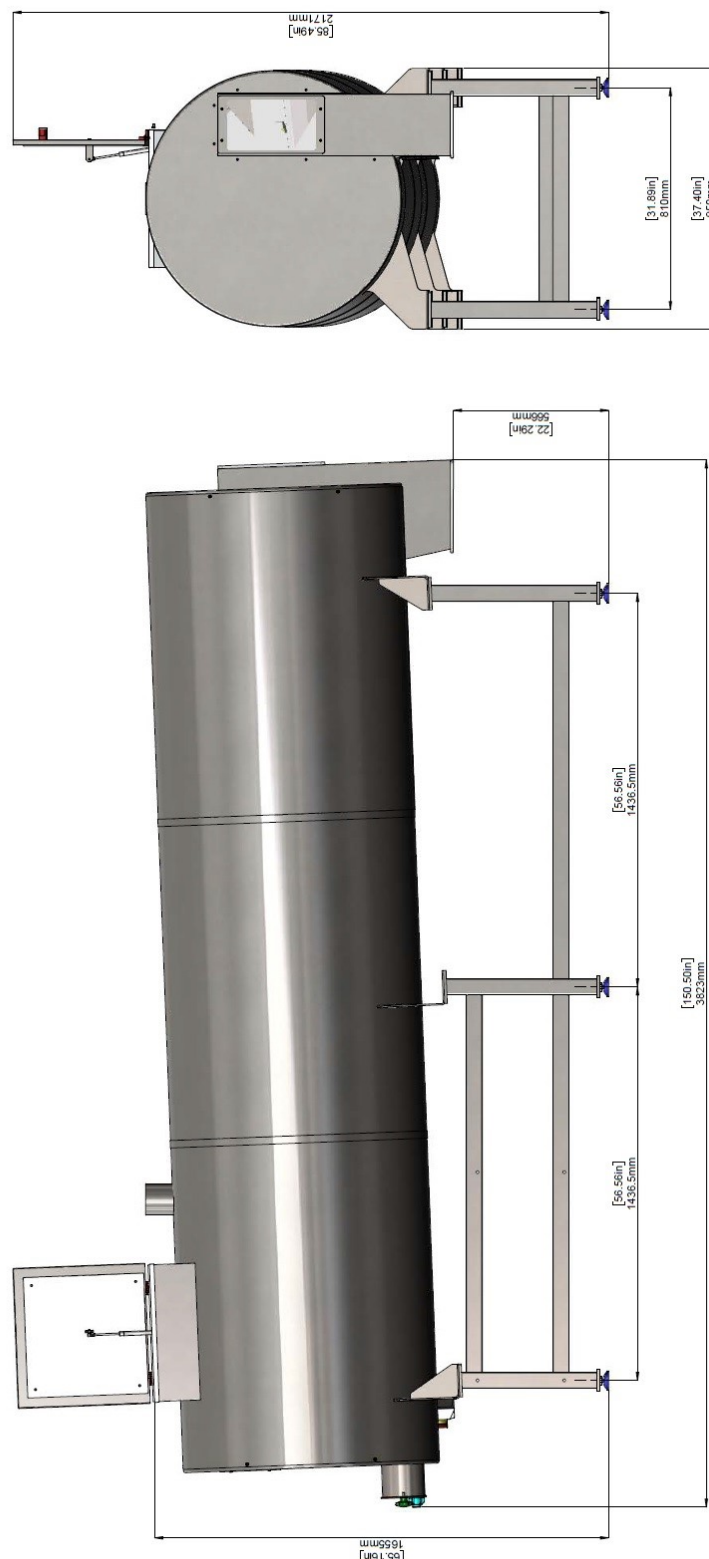


THE FOOD
WASTE EXPERTS



A900 ROCKET COMPOSTER

DIMENSIONS FOR ILLUSTRATION ONLY





**THE FOOD
WASTE EXPERTS**



A1200 ROCKET COMPOSTER

OUR THIRD LARGEST FOOD WASTE COMPOSTER, THE A1200 IS A POPULAR SYSTEM FOR USE AT GAS / OIL CAMPS, MINES AND LARGE UNIVERSITIES. THE A1200 CONTACT PARTS ARE CONSTRUCTED IN STAINLESS STEEL AND HAVING ONLY ONE PRIMARY MOVING PART, RUNNING COSTS ARE KEPT LOW

The A1200 Rocket composter comprises of a static drum body with an intermittently turning central agitator & all parts that are in contact with organics are manufactured in 304SS. With minimal moving parts consequently energy use is low, but reliability and longevity of service are high.

This unit is extremely robust and simple to maintain, but also comes equipped with a highly flexible HMI system, that gives the operator a much greater level of process control, allowing them to continually fine tune the process for different mixes.

The Rocket range of in vessel composters are suitable for the on-site processing of:

- Cooked / Uncooked Meat & Fish
- Cooked / Uncooked Fruit & Vegetables
- Garden Waste / Green Wastes
- Animal Waste (including some types of bedding)



" We needed a permanent solution to the food wastes generated at the camp, with hundreds of people eating three meals daily and the nearest disposal site over 250 kilometres away having a solution on site was a must, the added bonus that the end product can be used on the land around the camp saves any disposal requirements"

John W Jones

Environment Manager, Exxon

A1200 Rocket Pictured for illustration purposes only



**THE FOOD
WASTE EXPERTS**



A1200 ROCKET COMPOSTER

TECHNICAL DETAIL (BASE MODEL)

Size (Vessel only):	Length	7.0m
	Width	1.4m
	Height	1.8m (no hopper)
Construction:	304ss all parts in contact with organics	
Weight:	2750kg (empty)	
Target Performance:	Up to 650 litres per day (Determined by feed materials, loading frequency and operating conditions. Contact Tidy Planet for detailed advice)	
Drive Motor:	2.2 kw	
Heater Element:	4 x 1.0kw (thermostatically controlled)	
Air handling:	1 x 0.25kw	
Power Requirement:	3ph/400v/50hz	
Power Consumption:	30-60kwh+ per week average	
Temperature Recording:	6 insertion type to main vessel + ambient & exhaust (Data-logging included)	
Air extraction:	Included as standard	
Housing Requirements:	Min 10m x 4.0m x 4.0m (LxWxH) covered hard standing with non porous surface	
Optional Extras:	2m inclined compost stockpile conveyor 120 litre wheeled bin lifting system + hopper Low level hopper & feed conveyor Air injection system and side channel fan Modular bio-filter Power screen for refining end product Communication package	





**THE FOOD
WASTE EXPERTS**



A1200 ROCKET COMPOSTER

ANCILLARY OPTIONS



BIN LOADING SYSTEM

TIP CYCLE (SPEED)	50SEC~
MAX TIP WEIGHT	150KG
BIN SIZE	120L



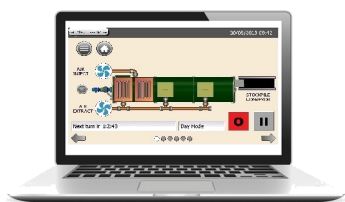
BIN LOADER & LIDDED HOPPER

TIP CYCLE (SPEED)	50SEC~
TIP WEIGHT	150KG
BIN SIZE	120L



AIR INJECTION SYSTEM

BLOWER	2.2KW
PRESSURE	400MBAR
INPUT POINTS	QTY 4



GLOBAL REMOTE MONITORING PACKAGE

CONNECTION	WIFI / ETHERNET / 4G
CLOUD DATA LOGGING	3YR
CLOUD NOTIFY PACKAGE	3YR



COMPOST STOCKPILE CONVEYOR

LENGTH	2.0M
TIP HEIGHT	1.0M~
SPEED	0.7M/S

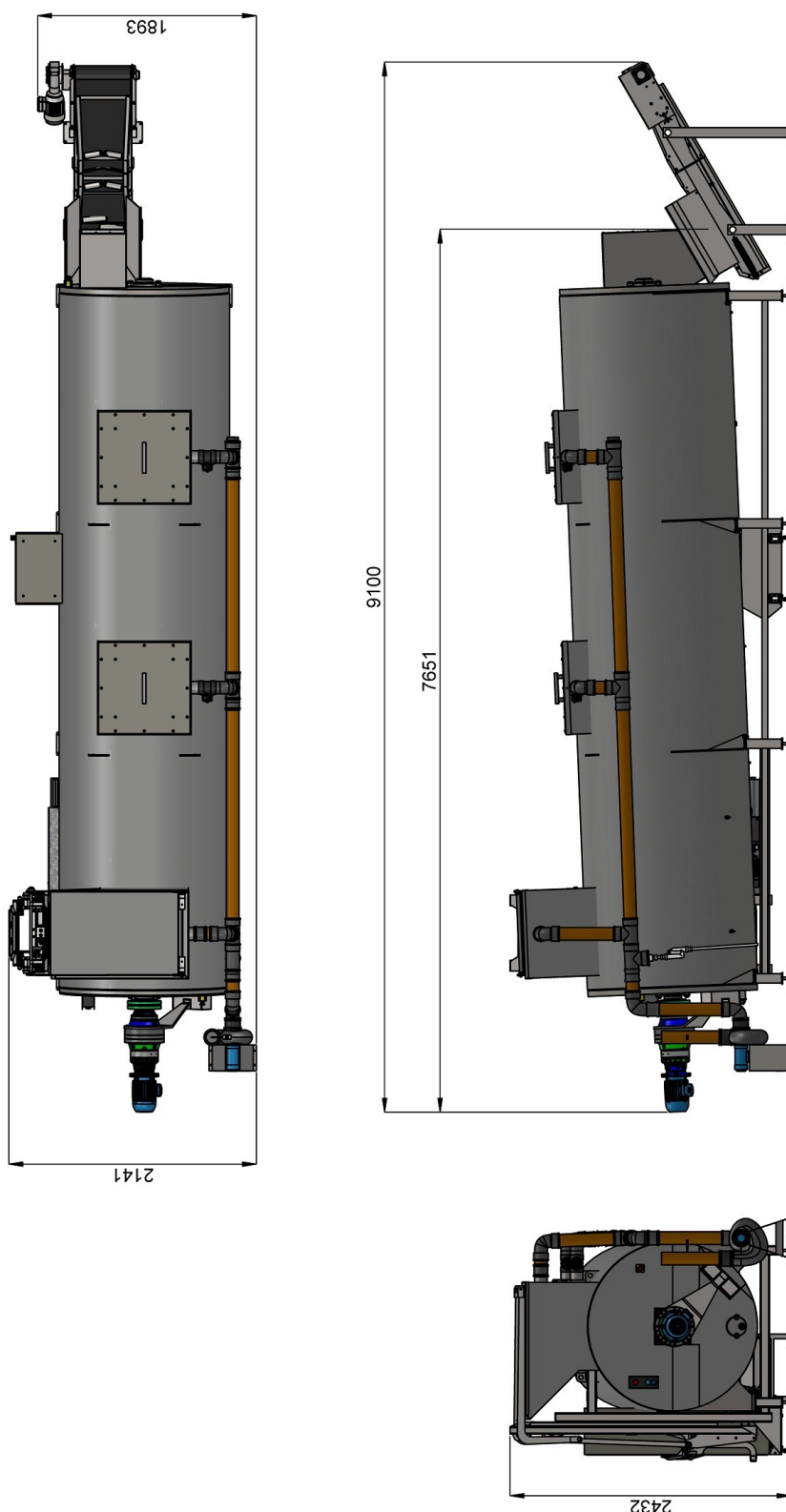


THE FOOD
WASTE EXPERTS



A1200 ROCKET COMPOSTER

LAYOUT FOR ILLUSTRATION PURPOSES ONLY





**THE FOOD
WASTE EXPERTS**



B1400 ROCKET COMPOSTER

THE B1400 HAS BEEN DESIGNED FOR THE GREATEST THROUGHPUT IN THE SMALLEST FOOTPRINT. A UNIQUE PATENTED “W” SHAPE HULL DESIGN WITH TWIN AGITATORS CREATES LESS COMPRESSION OF MATERIALS, BETTER AIR FLOW AND MORE MIXING. THE B1400 IS AN IDEAL SYSTEM FOR FOOD & GREEN WASTE COMPOSTING FOR SMALL SCALE MUNICIPALS

The B1400 Rocket, is a continual flow composting system and is capable of continuously processing a maximum of 2.2 cubic meters of material per day. An intuitive custom control system fully automates the process, continually monitoring parameters the PLC system will automatically feed from an attached bulk hopper to the composter and control the discharge of the finished compost, minimising operator interaction.

The B1400 has some unique design features, especially important the twin agitator shafts are wholly supported externally, so there's no obstructions to the internal material flow, or needs for maintenance requirements for internally mounted bearings.

Available as a stand alone portable organic waste solution, the B1400 can be specified with bio filtration, pre shredder & automated bulk feed hopper and can also be grouped as 2-3 units fed and controlled by the same PLC and feed hopper unit.

The B1400 Rocket Composters are suitable for the on-site processing of:

- Food wastes including: Cooked / Uncooked Meat, Fish, Fruit & Vegetables
- Effluent Sludges
- Green Wastes / Garden waste / landscaping
- Animal Waste (including some types of bedding)





**THE FOOD
WASTE EXPERTS**



B1400 ROCKET COMPOSTER

TECHNICAL SPECIFICATION

MAIN VESSEL DETAILS:

Size:	Length	8.67m
	Width	2.9m max
	Height	2.62m (Excluding any loading conveyor)
Weight		7000kg (empty) 18,000kg (nominal full)
Vessel Shell Construction:		304SS—8mm thick wall “W” Shaped hull construction
Vessel Inspection Hatches:		Qty x 2 units 600 x 600mm mounted on vessel roof centreline
Vessel Frame:		V2 Galvanised heavy duty steel support frame with option for load cell fitment (not exceeding 2.9m transport width)

PRE HEATERS:	Qty x 4 units of 2.0kw heater elements, each equipped with dual RTD Heat sensors
---------------------	--

TEMPERATURE MONITORING:

6x 80mm Insertion type RTD sensors mounted in centreline,
1 x ambient air temperature and 1 x exhaust air temperature

INSULATION:

Insulation to a thickness of 50mm
to the main vessel shell and roof and including the front and rear bulkheads. Cladding: 1.2mm steel cladding with a leather grained finish

PERFORMANCE

Throughput	2275 litres per day (Determined by feed materials, loading frequency and operating conditions. Contact Tidy Planet for detailed advice)
Residence time	Approx 8 days

MIXING SHAFTS / AGITATORS:

2 x shaft diameter of 220mm OD
10mm wall thickness 304SS

SHAFT DRIVE MOTOR / BEARINGS AND SEALS:

Drive:	2.2 kw drive (x2) 1450rpm
Gearbox:	Planetary Inline Type EQ 4150 1 rpm nominal O/P speed, Torque 16,000Nm

PROCESS AIR EXHAUST:

Extraction Points:	3 x 110mm diameter points mounted on vessel roof centreline
Fan:	Poly Prop Centrifugal fan with external motor. (MB 14/5M2 – 0.25Kw)
Fan Performance:	300 m ³ /hr at a total pressure head of 575 Pa

AIR INJECTION:

Injection points:	8 points supplied, easy removed pipework includes connection for compressed air to aid cleaning of nozzles
Blower performance:	1.5kw side channel blower providing up to 400mb at max 38m ³ per hour. Equipped with pressure relief valve.



**THE FOOD
WASTE EXPERTS**



B1400 ROCKET COMPOSTER

TECHNICAL SPECIFICATION

INTEGRATED COMPOST DISCHARGE

Screw Dia:	400 mm
Screw Length:	2000mm
Construction:	304ss trough & hardened mild steel spiral with UHMWPE Liner

(OPTIONAL) COMPOST STOCKPILE CONVEYOR

Length:	6000 mm
Width	450mm
Construction:	Heavy duty galvanised steel body, with chevron belt, support frame to allow the belt to incline to 30Degrees and stockpile the finished compost away from the vessel

CONTROL SYSTEM:

Cabinet:	IP55 Floor standing cabinet, constructed from mild steel, painted, 1600 x 1200 x 400 with plinth. Equipped with cabinet mounted Estop & lockable isolator, USB Port for software upgrades and data downloads
-----------------	--

HMI System:	Beijer Technologies X2, with a 10 inch full colour display. IP Rated touch screen interface: Displays & Capabilities: <ul style="list-style-type: none">• Current machine operating status• Vessel temperatures, motor load currents, current weight• Records and stores trends for temperatures, motor currents, weights*, alarm log and audit trail.• USB connector to down load data to flash drive mounted on Schneider cabinet• Programmable automatic transmittal of data by Email through connection to separate communication device
--------------------	--





**THE FOOD
WASTE EXPERTS**



B1400 ROCKET COMPOSTER

ANCILLARY OPTIONS



BIN LOADER & LIDDED HOPPER

TIP CYCLE (SPEED) 50SEC~

TIP WEIGHT 100KG

BIN SIZE 120L



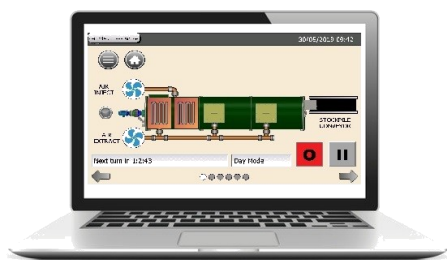
BIOMIXER FEED HOPPER WITH 6M CONVEYOR

CAPACITY 5000KG@0.5BD

POWER SUPPLY 415V 50HZ 3PHASE

CONFIGURATION VERTICAL

(MULTIPLE OPTIONS AVAILABLE)



GLOBAL REMOTE MONITORING PACKAGE

CONNECTION WIFI / ETHERNET / 4G

CLOUD DATA LOGGING 3YR

CLOUD NOTIFY PACKAGE 3YR



**THE FOOD
WASTE EXPERTS**



B1400 ROCKET COMPOSTER

ANCILLARY OPTIONS



INTEGRATED STOCKPILE CONVEYOR (SCREW)

LENGTH	6.0M
TIP HEIGHT	2.5M~
CAPACITY	2TONNE /HR
PRICE	£POA



COMPOST STOCKPILE CONVEYOR (BELT)

LENGTH	6.0M
TIP HEIGHT	2.0M~
SPEED	0.7M/S

**(USED IN CONJUNCTION WITH EXISTING 1.1M
SCREW OUTFEED)**



BIOFILTER SYSTEM

CONSTRUCTION	304SS~
WEIGHT	400KG
SIZE	4800L

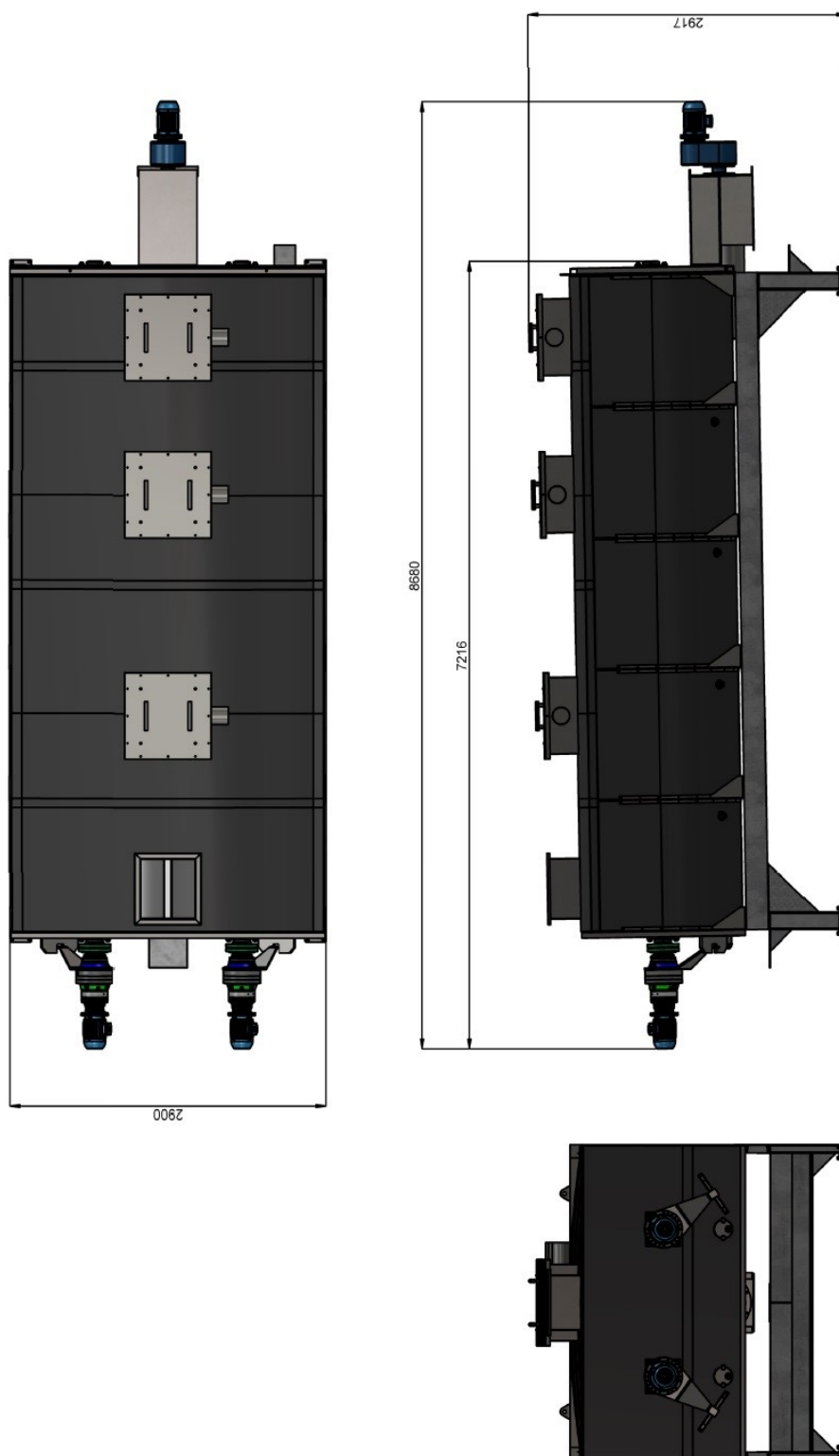


THE FOOD
WASTE EXPERTS



B1400 ROCKET COMPOSTER

DIMENSIONS FOR ILLUSTRATION ONLY





TECHNICAL SPECIFICATION

Dehydra Food Waste Dewaterer Enclosed Bench

Our stand-alone, self-cleaning Dehydra Bench Dewaterer reduces food waste volume by up to 80% and its weight by 50% efficiently recovering the minimised, dewatered solids for collection and disposal.

Dehydra Food Waste Dewaterer Enclosed Bench

CAPACITY

The Dehydra systems are capable of processing up to 700kg per hour of wet food wastes. However, this processing capacity is wholly dependant upon the efficacy of the operator loading the system and the types of waste being processed – particularly how much free running liquid is within the waste.

FEED MATERIALS

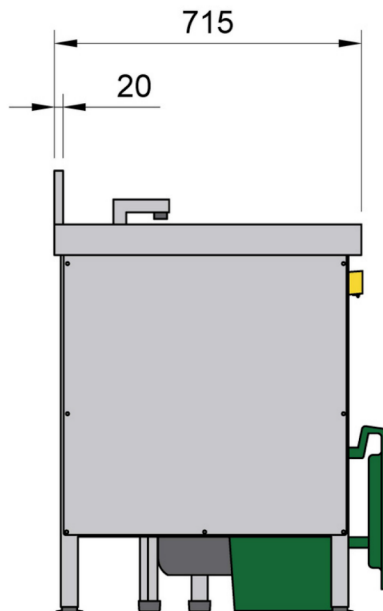
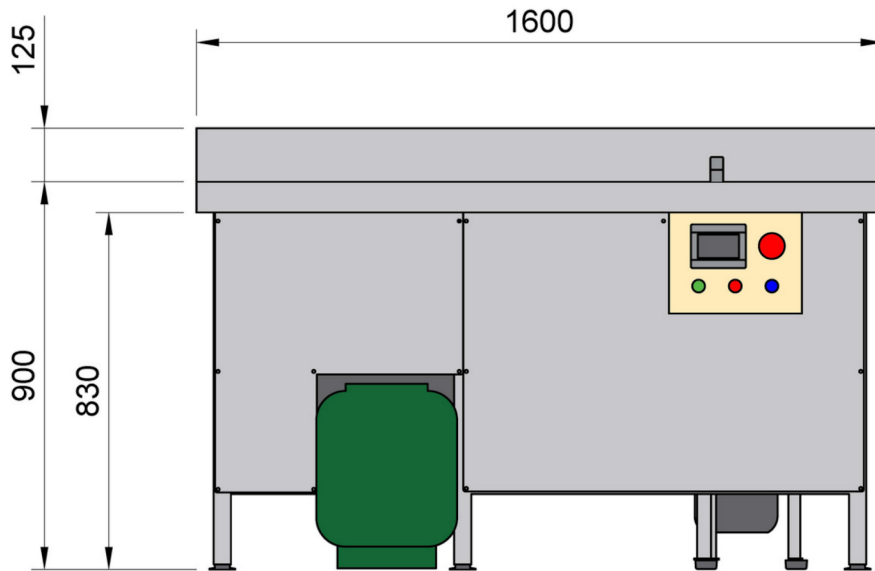
The Dehydra systems can process almost anything that is or was edible – cooked or uncooked. It is ideally used to process large amounts of post-consumer plate scrapings, vegetable offcuts, high-liquid-content meals such as pasta sauces or curries.

Any inedible foods – such as large bones, shells, and joints etc. – are not to be processed. The Dehydra system should not be used to process bulk amounts of dry, especially starchy, items. This includes cooked rice, pasta, or potato, nor should it be used for highly fibrous items such as full corn cobs or artichoke.

TECHNICAL DETAILS

LENGTH	1.6m
WIDTH	0.72m
HEIGHT	0.93m
WEIGHT	250kg
CAPACITY	Up to 700kg per hour (1-1.4m ³)
INSTALLED MOTOR POWER	4.1kw
POWER REQUIREMENT	380-415v 50hz 16A 3ph 4wire
WATER CONSUMPTION	8-10 litres of cold per minute 3 litres of hot water per cleaning cycle
CONNECTION REQUIREMENTS	Mains hot & cold water 15mm supply with a 3/4 standard hose connection Mains pressure at 3bar +/- 1bar Hot water supply at 30-60DegC Mains sewer 50mm gravity fed connection starting at 169mm above floor level
SUPPLIED AS STANDARD	Intuitive touch screen controls Safety interlocked feed hopper Bin full and bin missing auto shut off Self clean facility Plate scrape rest Magnetic cutlery saver Auto power off on no load Lower noise levels 70-80db Heavy duty class A air gap / tap

Dehydra Food Waste Dewaterer Enclosed Bench



Contact us for more information

+44(0)1625 666798

hello@tidyplanet.co.uk



TECHNICAL SPECIFICATION

Dehydra Food Waste Dewaterer Supercompact

The Dehydra Super Compact Dewaterer is the ideal piece of equipment for organisations seeking maximum food waste reduction with minimum footprint. All the Dehydra technology is neatly packed inside a mini unit measuring only 1.0m wide by 0.7 deep.

Dehydra Food Waste Dewaterer Supercompact

CAPACITY

The Dehydra systems are capable of processing up to 700kg per hour of wet food wastes. However, this processing capacity is wholly dependant upon the efficacy of the operator loading the system and the types of waste being processed – particularly how much free running liquid is within the waste.

FEED MATERIALS

The Dehydra systems can process almost anything that is or was edible – cooked or uncooked. It is ideally used to process large amounts of post-consumer plate scrapings, vegetable offcuts, high-liquid-content meals such as pasta sauces or curries.

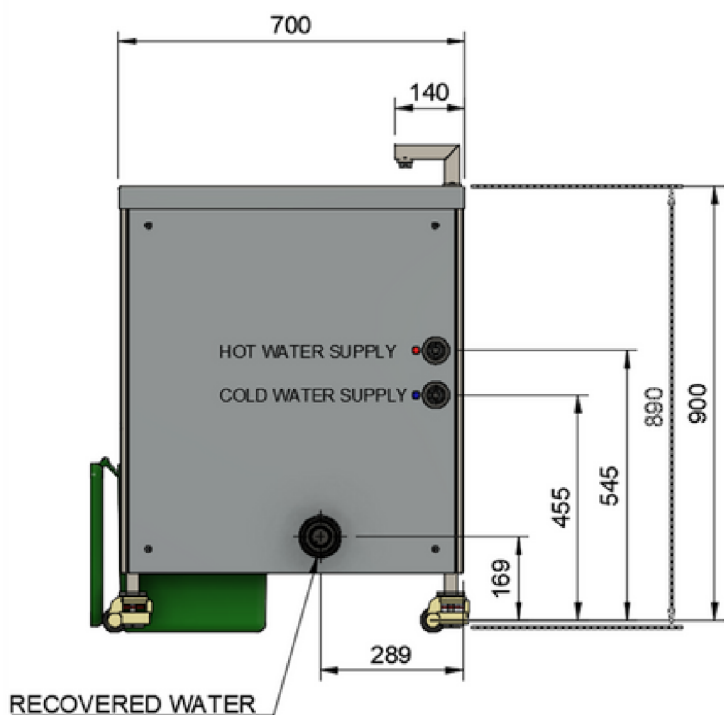
Any inedible foods – such as large bones, shells, and joints etc. – are not to be processed. The Dehydra system should not be used to process bulk amounts of dry, especially starchy, items. This includes cooked rice, pasta, or potato, nor should it be used for highly fibrous items such as full corn cobs or artichoke.

TECHNICAL DETAILS

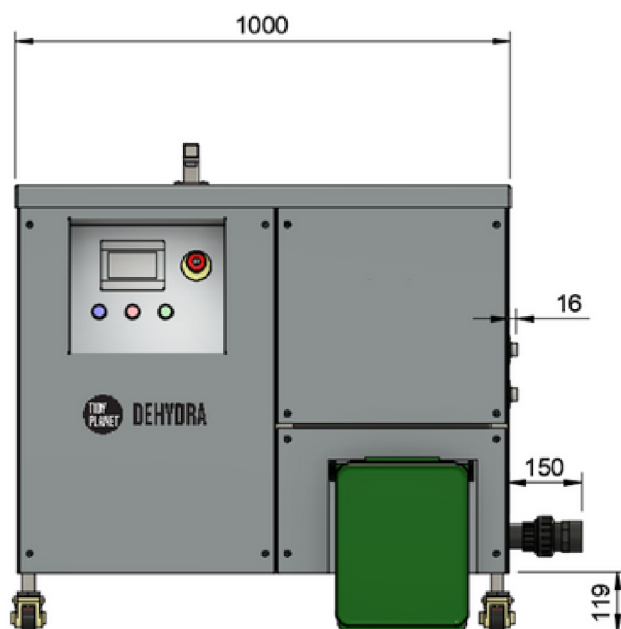
LENGTH	1.0m
WIDTH	0.70m
HEIGHT	0.90m
WEIGHT	197kg
CAPACITY	Up to 700kg per hour (1-1.4m ³)
INSTALLED MOTOR POWER	4.1kw
POWER REQUIREMENT	380-415v 50hz 16A 3ph 4wire
WATER CONSUMPTION	8-10 litres of cold per minute 3 litres of hot water per cleaning cycle
CONNECTION REQUIREMENTS	Mains hot & cold water 15mm supply with a 3/4 standard hose connection Mains pressure at 3bar +/- 1bar Hot water supply at 30-60DegC Mains sewer 50mm gravity fed connection starting at 169mm above floor level
SUPPLIED AS STANDARD	Intuitive touch screen controls Safety interlocked feed hopper Bin full and bin missing auto shut off Self clean facility Plate scrape rest Magnetic cutlery saver Auto power off on no load Lower noise levels 70-80db Heavy duty class A air gap / tap

Dehydra Food Waste Dewaterer Supercompact

SIDE VIEW



FRONT VIEW



Contact us for more information

+44(0)1625 666798

hello@tidyplanet.co.uk